

Regent

Series Rear Discharge Lawn Tractors

Products

| Mfg. No. | Description |
|------------|--|
| 2691105-00 | ELT2242RDF, 22 Gross HP Rear Discharge Lawn Tractor and 107cm Mower Deck (CE/Export) |
| 2691105-01 | ELT2242RDF, 22 Gross HP Rear Discharge Lawn Tractor and 107cm Mower Deck (CE/Export) |
| 2691106-00 | ELT2642RDF, 26 Gross HP Rear Discharge Lawn Tractor and 107cm Mower Deck (CE/Export) |
| 2691106-01 | ELT2642RDF, 26 Gross HP Rear Discharge Lawn Tractor and 107cm Mower Deck (CE/Export) |
| 2691121-00 | ELT17538RDF, 17.5 Gross HP Rear Discharge Lawn Tractor and 96cm Mower Deck (CE/Export) |
| 2691121-01 | ELT17538RDF, 17.5 Gross HP Rear Discharge Lawn Tractor and 96cm Mower Deck (CE/Export) |
| 2691122-00 | ELT1838RDF, 18 Gross HP Rear Discharge Lawn Tractor and 96cm Mower Deck (CE/Export) |
| 2691122-01 | ELT1838RDF, 18 Gross HP Rear Discharge Lawn Tractor and 96cm Mower Deck (CE/Export) |

Not for
Reproduction

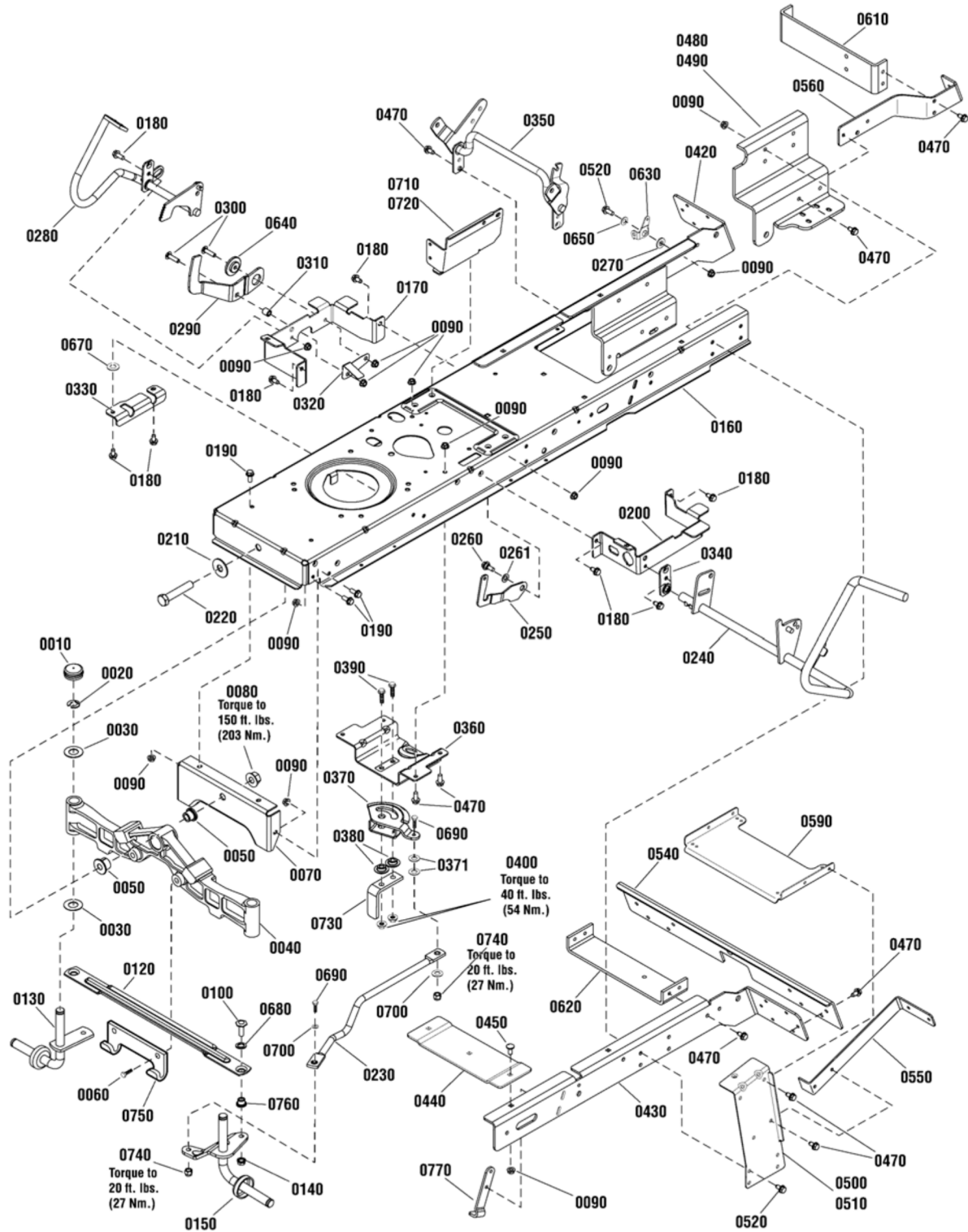
| PRODUCT COMPONENTS | PAGES |
|--|--------------------------|
| Frame & Front Axle Group | 4 |
| Frame & Front Axle Group | 6 |
| Steering Group | 10 |
| Engine Group | 12 |
| Transmission Group | 14 |
| Transmission SERVICE PARTS - Hydro Gear 324-0610 | 16 |
| Controls Group | 22 |
| Electrical Group | 24 |
| Hood, Grille & Dash Group | 28 |
| Seat Deck & Fuel Tank Group | 30 |
| Lift Group | 34 |
| Wheel & Tire Group | 36 |
| Decals Group | 38 |
| Collector Group - 280 Liter | 40 |
| Collector Group - 350 Liter | 44 |
| Guard Group | 48 |
| 107cm Mower Deck | 50 |
| 96cm Mower Deck - Clutch Group | 54 |
| 96cm Mower Deck - Housing, Arbors & Blades Group | 56 |
| 96cm Mower Deck - Support Group | 58 |
| Torque Specification Chart | Inside Back Cover |

Not for
 Reproduction

Frame & Front Axle Group

885908

NOTE: Unless noted otherwise,
use the standard hardware torque
specification chart.



The above parts group applies to the following Mfg. Nos.:

- 2691105-01 - ELT2242RDF
- 2691106-01 - ELT2642RDF
- 2691121-01 - ELT17538RDF
- 2691122-01 - ELT1838RDF

Frame & Front Axle Group

| REF NO | PART NO. | QTY. | DESCRIPTION |
|--------|-------------|------|---|
| 0010 | 1734135SM | 2 | CAP, Hub |
| 0020 | 1611710SM | 2 | E-RING, 3/4 |
| 0030 | 2860183SM | 4 | WASHER, Flat, 3/4 |
| 0040 | 1728018SM | 1 | AXLE, Front |
| 0050 | 1730186SM | 2 | BUSHING |
| 0060 | 1960652SM | 2 | SCREW, Hex Flange, Whiz Lock, 7/16-14 x 1-1/2 |
| 0070 | 1727902SM | 1 | PLATE, Axle Support |
| 0080 | 2860646SM | 1 | NUT, Hex Flange Two-Way Lock, 5/8-11 |
| 0090 | 1931277SM | 28 | NUT, Hex Flange, Whiz Lock, 5/16-18 |
| 0100 | 1960032SM | 2 | CAPSCREW, Hex Head, 3/8-16 x 1-1/4, .141 Thread G5 |
| 0120 | 1751964YP | 1 | TIE ROD |
| 0130 | 1727872ASM | 1 | SPINDLE & CUP ASSEMBLY, R.H. |
| 0140 | 1930645SM | 2 | NUT, Hex, Flange, Locking, 3/8-16 |
| 0150 | 1751922YP | 1 | SPINDLE & ARM ASSEMBLY, L.H. |
| 0160 | ---- | 1 | FRAME (Not a serviceable part) |
| 0170 | 1727904SM | 1 | SUPPORT, Front Footrest R.H. |
| 0180 | 1930601SM | 8 | SCREW, Taptite, 5/16-18 x 5/8 |
| 0190 | 93571MA | 10 | CAPSCREW, Hex Head, Flange Whiz Lock, 5/16-18 x 3/4 |
| 0200 | 885536AYP | 1 | SUPPORT, Front Footrest L.H. |
| 0210 | 1960035SM | 1 | WASHER, Flat, 5/8 |
| 0220 | 2860744SM | 1 | CAPSCREW, Hex Head, 5/8-11 x 3-1/4 G5 |
| 0230 | 1738051YP | 1 | LINK, Drag |
| 0240 | 885694YP | 1 | PEDAL ASSEMBLY, Brake |
| 0250 | 1735595YP | 1 | LATCH, Brake Lock |
| 0260 | 1729576SM | 1 | BOLT, Shoulder, 5/16-18 x 1-1/8 |
| 0261 | 7014296YP | 1 | WASHER |
| 0270 | 1727935SM | 1 | SPACER, Pivot |
| 0280 | 1736714AYP | 1 | PEDAL ASSEMBLY, Forward |
| 0290 | 1727246SM | 1 | PEDAL, Reverse |
| 0300 | 1960223SM | 2 | BOLT, Carriage, 5/16-18 x 1-1/4 |
| 0310 | 1728024SM | 1 | SPACER, Foot Pedal |
| 0320 | 1728025BMYP | 1 | ACTUATOR, RMO Switch |
| 0330 | 885591AYP | 1 | BRACKET, Pedal Pivot |
| 0340 | 1727911ASM | 1 | PLATE, Bearing |
| 0350 | 885579AYP | 1 | LIFT SHAFT ASSEMBLY |
| 0360 | 1727940SM | 1 | BRACKET, Sector Support |
| 0370 | 1751110YP | 1 | GEAR, Steering |
| 0371 | 703298 | 2 | WASHER, 5/16 |
| 0380 | 1728122SM | 2 | SPACER, Sector Gear |
| 0390 | 1960032SM | 2 | SCREW, Hex Head, 3/8-16 x 1-1/4, G5 |
| 0400 | 1930645SM | 2 | NUT, Hex Flange, Two Way Lock, 3/8-16 |
| 0420 | 885508AYP | 1 | BRACKET, Rear Frame, RH |
| 0430 | 885509AYP | 1 | BRACKET, Rear Frame, LH |
| 0440 | 885532AYP | 1 | BRACE, Middle Cross |

Footnotes

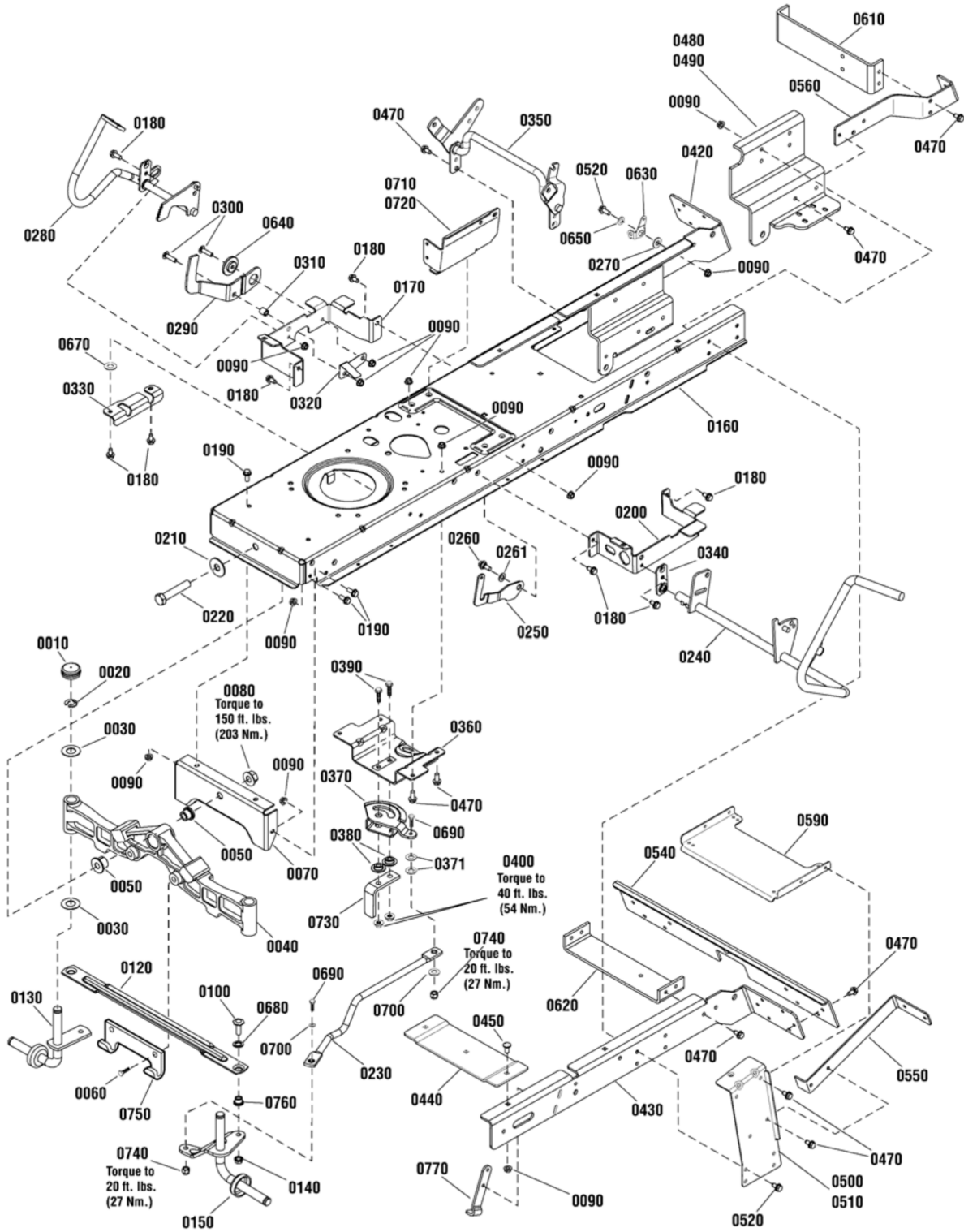
The above parts group applies to the following Mfg. Nos.:

2691105-01 - ELT2242RDF
 2691106-01 - ELT2642RDF
 2691121-01 - ELT17538RDF
 2691122-01 - ELT1838RDF

Frame & Front Axle Group

NOTE: Unless noted otherwise,
use the standard hardware torque
specification chart.

885908



The above parts group applies to the following Mfg. Nos.:

- 2691105-00 - ELT2242RDF
- 2691106-00 - ELT2642RDF
- 2691121-00 - ELT17538RDF
- 2691122-00 - ELT1838RDF

Frame & Front Axle Group

| REF NO | PART NO. | QTY. | DESCRIPTION |
|--------|-------------|------|---|
| 0010 | 1734135SM | 2 | CAP, Hub |
| 0020 | 1611710SM | 2 | E-RING, 3/4 |
| 0030 | 2860183SM | 4 | WASHER, Flat, 3/4 |
| 0040 | 1728018SM | 1 | AXLE, Front |
| 0050 | 1730186SM | 2 | BUSHING |
| 0060 | 1960652SM | 2 | SCREW, Hex Flange, Whiz Lock, 7/16-14 x 1-1/2 |
| 0070 | 1727902SM | 1 | PLATE, Axle Support |
| 0080 | 2860646SM | 1 | NUT, Hex Flange Two-Way Lock, 5/8-11 |
| 0090 | 1931277SM | 28 | NUT, Hex Flange, Whiz Lock, 5/16-18 |
| 0100 | 1960032SM | 2 | CAPSCREW, Hex Head, 3/8-16 x 1-1/4, .141 Thread G5 |
| 0120 | 1751964YP | 1 | TIE ROD |
| 0130 | 1727872ASM | 1 | SPINDLE & CUP ASSEMBLY, R.H. |
| 0140 | 1930645SM | 2 | NUT, Hex, Flange, Locking, 3/8-16 |
| 0150 | 1751922YP | 1 | SPINDLE & ARM ASSEMBLY, L.H. |
| 0160 | 885656BMYP | 1 | FRAME |
| 0170 | 1727904SM | 1 | SUPPORT, Front Footrest R.H. |
| 0180 | 1930601SM | 8 | SCREW, Taptite, 5/16-18 x 5/8 |
| 0190 | 93571MA | 10 | CAPSCREW, Hex Head, Flange Whiz Lock, 5/16-18 x 3/4 |
| 0200 | 885536AYP | 1 | SUPPORT, Front Footrest L.H. |
| 0210 | 1960035SM | 1 | WASHER, Flat, 5/8 |
| 0220 | 2860744SM | 1 | CAPSCREW, Hex Head, 5/8-11 x 3-1/4 G5 |
| 0230 | 1738051YP | 1 | LINK, Drag |
| 0240 | 885694YP | 1 | PEDAL ASSEMBLY, Brake |
| 0250 | 1735595YP | 1 | LATCH, Brake Lock |
| 0260 | 1729576SM | 1 | BOLT, Shoulder, 5/16-18 x 1-1/8 |
| 0261 | 7014296YP | 1 | WASHER |
| 0270 | 1727935SM | 1 | SPACER, Pivot |
| 0280 | 1736714AYP | 1 | PEDAL ASSEMBLY, Forward |
| 0290 | 1727246SM | 1 | PEDAL, Reverse |
| 0300 | 1960223SM | 2 | BOLT, Carriage, 5/16-18 x 1-1/4 |
| 0310 | 1728024SM | 1 | SPACER, Foot Pedal |
| 0320 | 1728025BMYP | 1 | ACTUATOR, RMO Switch |
| 0330 | 885591AYP | 1 | BRACKET, Pedal Pivot |
| 0340 | 1727911ASM | 1 | PLATE, Bearing |
| 0350 | 885579AYP | 1 | LIFT SHAFT ASSEMBLY |
| 0360 | 1727940SM | 1 | BRACKET, Sector Support |
| 0370 | 1751110YP | 1 | GEAR, Steering |
| 0371 | 703298 | 2 | WASHER, 5/16 |
| 0380 | 1728122SM | 2 | SPACER, Sector Gear |
| 0390 | 1960032SM | 2 | SCREW, Hex Head, 3/8-16 x 1-1/4, G5 |
| 0400 | 1930645SM | 2 | NUT, Hex Flange, Two Way Lock, 3/8-16 |
| 0420 | 885508AYP | 1 | BRACKET, Rear Frame, RH |
| 0430 | 885509AYP | 1 | BRACKET, Rear Frame, LH |
| 0440 | 885532AYP | 1 | BRACE, Middle Cross |
| 0450 | 703185 | 5 | BOLT, Carriage, Short Neck, 5/16-18 x 3/4, G5 |

Footnotes

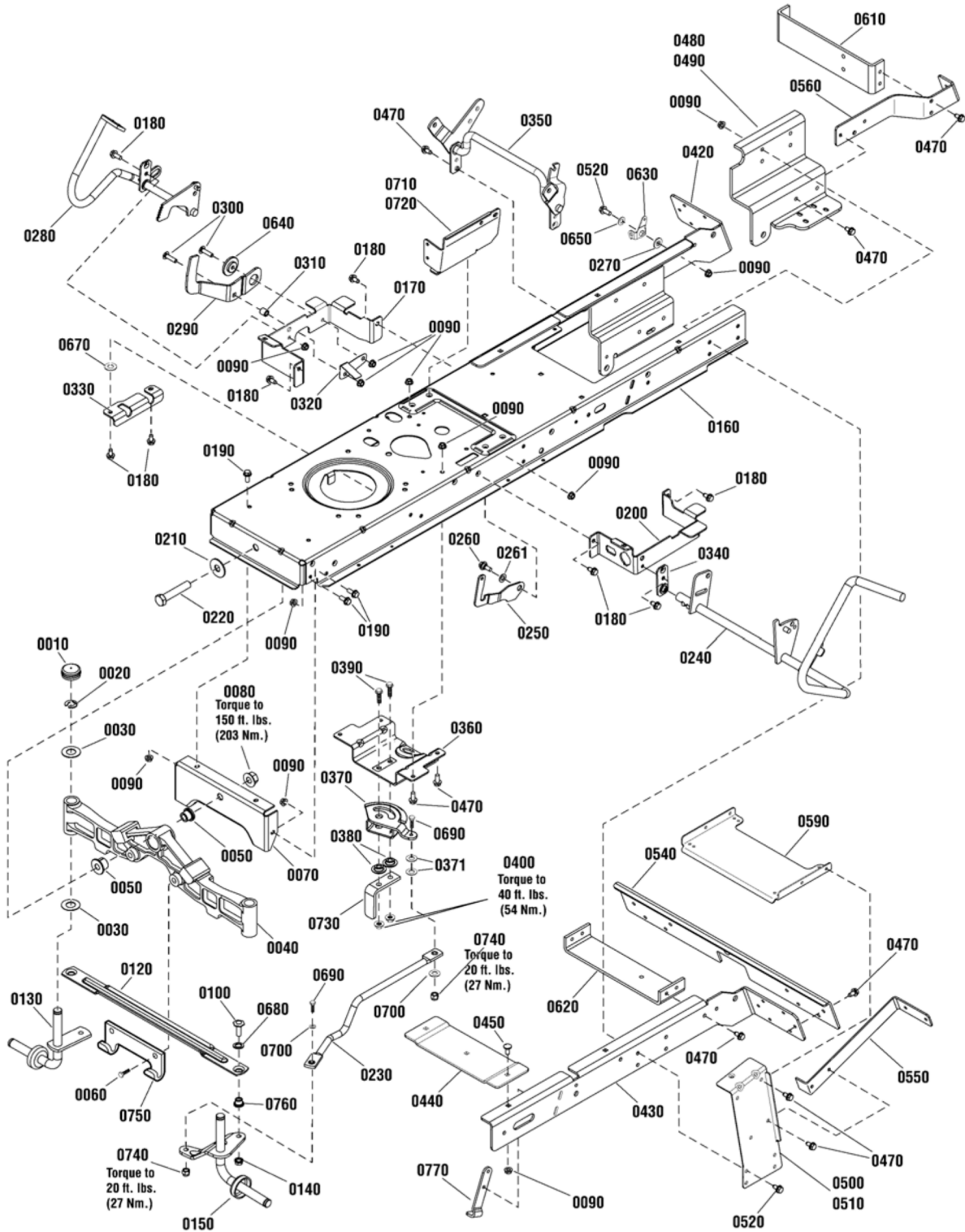
The above parts group applies to the following Mfg. Nos.:

2691105-00 - ELT2242RDF
 2691106-00 - ELT2642RDF
 2691121-00 - ELT17538RDF
 2691122-00 - ELT1838RDF

Frame & Front Axle Group

885908

NOTE: Unless noted otherwise,
use the standard hardware torque
specification chart.



The above parts group applies to the following Mfg. Nos.:

- 2691105-01 - ELT2242RDF
- 2691106-01 - ELT2642RDF
- 2691121-01 - ELT17538RDF
- 2691122-01 - ELT1838RDF

Frame & Front Axle Group

| REF NO | PART NO. | QTY. | DESCRIPTION |
|--------|-------------|------|---|
| 0010 | 1734135SM | 2 | CAP, Hub |
| 0020 | 1611710SM | 2 | E-RING, 3/4 |
| 0030 | 2860183SM | 4 | WASHER, Flat, 3/4 |
| 0040 | 1728018SM | 1 | AXLE, Front |
| 0050 | 1730186SM | 2 | BUSHING |
| 0060 | 1960652SM | 2 | SCREW, Hex Flange, Whiz Lock, 7/16-14 x 1-1/2 |
| 0070 | 1727902SM | 1 | PLATE, Axle Support |
| 0080 | 2860646SM | 1 | NUT, Hex Flange Two-Way Lock, 5/8-11 |
| 0090 | 1931277SM | 28 | NUT, Hex Flange, Whiz Lock, 5/16-18 |
| 0100 | 1960032SM | 2 | CAPSCREW, Hex Head, 3/8-16 x 1-1/4, .141 Thread G5 |
| 0120 | 1751964YP | 1 | TIE ROD |
| 0130 | 1727872ASM | 1 | SPINDLE & CUP ASSEMBLY, R.H. |
| 0140 | 1930645SM | 2 | NUT, Hex, Flange, Locking, 3/8-16 |
| 0150 | 1751922YP | 1 | SPINDLE & ARM ASSEMBLY, L.H. |
| 0160 | 885656BMYP | 1 | FRAME |
| 0170 | 1727904SM | 1 | SUPPORT, Front Footrest R.H. |
| 0180 | 1930601SM | 8 | SCREW, Taptite, 5/16-18 x 5/8 |
| 0190 | 93571MA | 10 | CAPSCREW, Hex Head, Flange Whiz Lock, 5/16-18 x 3/4 |
| 0200 | 885536AYP | 1 | SUPPORT, Front Footrest L.H. |
| 0210 | 1960035SM | 1 | WASHER, Flat, 5/8 |
| 0220 | 2860744SM | 1 | CAPSCREW, Hex Head, 5/8-11 x 3-1/4 G5 |
| 0230 | 1738051YP | 1 | LINK, Drag |
| 0240 | 885694YP | 1 | PEDAL ASSEMBLY, Brake |
| 0250 | 1735595YP | 1 | LATCH, Brake Lock |
| 0260 | 1729576SM | 1 | BOLT, Shoulder, 5/16-18 x 1-1/8 |
| 0261 | 7014296YP | 1 | WASHER |
| 0270 | 1727935SM | 1 | SPACER, Pivot |
| 0280 | 1736714AYP | 1 | PEDAL ASSEMBLY, Forward |
| 0290 | 1727246SM | 1 | PEDAL, Reverse |
| 0300 | 1960223SM | 2 | BOLT, Carriage, 5/16-18 x 1-1/4 |
| 0310 | 1728024SM | 1 | SPACER, Foot Pedal |
| 0320 | 1728025BMYP | 1 | ACTUATOR, RMO Switch |
| 0330 | 885591AYP | 1 | BRACKET, Pedal Pivot |
| 0340 | 1727911ASM | 1 | PLATE, Bearing |
| 0350 | 885579AYP | 1 | LIFT SHAFT ASSEMBLY |
| 0360 | 1727940SM | 1 | BRACKET, Sector Support |
| 0370 | 1751110YP | 1 | GEAR, Steering |
| 0371 | 703298 | 2 | WASHER, 5/16 |
| 0380 | 1728122SM | 2 | SPACER, Sector Gear |
| 0390 | 1960032SM | 2 | SCREW, Hex Head, 3/8-16 x 1-1/4, G5 |
| 0400 | 1930645SM | 2 | NUT, Hex Flange, Two Way Lock, 3/8-16 |
| 0420 | 885508AYP | 1 | BRACKET, Rear Frame, RH |
| 0430 | 885509AYP | 1 | BRACKET, Rear Frame, LH |
| 0440 | 885532AYP | 1 | BRACE, Middle Cross |
| 0450 | 703185 | 5 | BOLT, Carriage, Short Neck, 5/16-18 x 3/4, G5 |

Footnotes

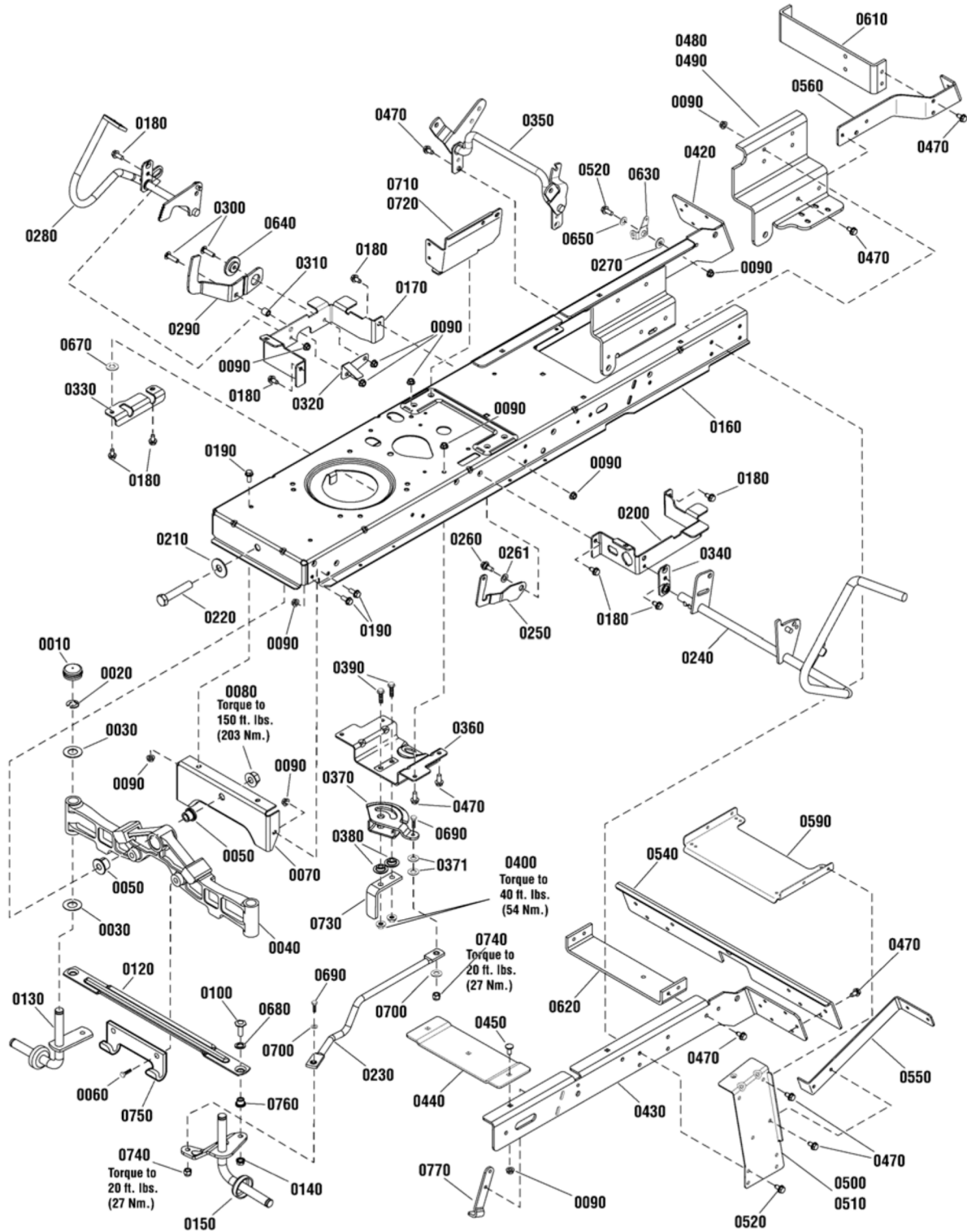
The above parts group applies to the following Mfg. Nos.:

2691105-01 - ELT2242RDF
 2691106-01 - ELT2642RDF
 2691121-01 - ELT17538RDF
 2691122-01 - ELT1838RDF

Frame & Front Axle Group

NOTE: Unless noted otherwise,
use the standard hardware torque
specification chart.

885908



The above parts group applies to the following Mfg. Nos.:

- 2691105-00 - ELT2242RDF
- 2691106-00 - ELT2642RDF
- 2691121-00 - ELT17538RDF
- 2691122-00 - ELT1838RDF

Frame & Front Axle Group

| REF NO | PART NO. | QTY. | DESCRIPTION |
|--------|------------|------|---|
| 0450 | 703185 | 5 | BOLT, Carriage, Short Neck, 5/16-18 x 3/4, G5 |
| 0470 | 703228 | 33 | CAPSCREW, Hex Washer Head, Taptite, 5/16-18 x 3/4 |
| 0480 | 885474AYP | 1 | BRACKET, Transaxle, RH |
| 0490 | 885475AYP | 1 | BRACKET, Transaxle, LH |
| 0500 | 885411AYP | 1 | SUPPORT, Deck, R.H. |
| 0510 | 885412AYP | 1 | SUPPORT, Deck, L.H. |
| 0520 | 001X84MA | 9 | CAPSCREW, Hex Head, 5/16-18 x 1, G5 |
| 0540 | 885469AYP | 1 | BRACKET, Middle Back Plate |
| 0550 | 885466AYP | 2 | SUPPORT, Upper, Back Plate |
| 0560 | 885467AYP | 2 | SUPPORT, Lower, Back Plate |
| 0590 | 885503AYP | 1 | BRACE, Cross Deck Support |
| 0610 | 885890YP | 1 | BRACKET, Torque |
| 0620 | 885486AYP | 1 | BRACKET, Idler Mount |
| 0630 | 1728990ASM | 1 | CLEVIS, Lift |
| 0640 | 1727935SM | 1 | SPACER, Pivot |
| 0650 | 1960044SM | 1 | WASHER, 5/16 |
| 0670 | 1919326SM | 2 | WASHER, 5/16 |
| 0680 | 1960703SM | 2 | WASHER, 5/8 |
| 0690 | 1921977SM | 2 | CAPSCREW, Hex Head, 5/16-18 x 1-1/4, G5 |
| 0700 | 703302 | 2 | WASHER, 5/16 |
| 0710 | 885695BMYP | 1 | BRACKET, Tower Support, LH |
| 0720 | 885696BMYP | 1 | BRACKET, Tower Support, RH |
| 0730 | 885791YP | 1 | UPSTOP |
| 0740 | 1935048SM | 2 | NUT, Hex Flange, Two Way Lock, 5/16-18 |
| 0750 | 1721918ASM | 1 | HOOK, Mower, Hitch |
| 0760 | 1731912SM | 2 | BUSHING, 3/8 ID x 5/8 OD x 1/2" |
| 0770 | 885527AYP | 2 | UPSTOP |

Footnotes

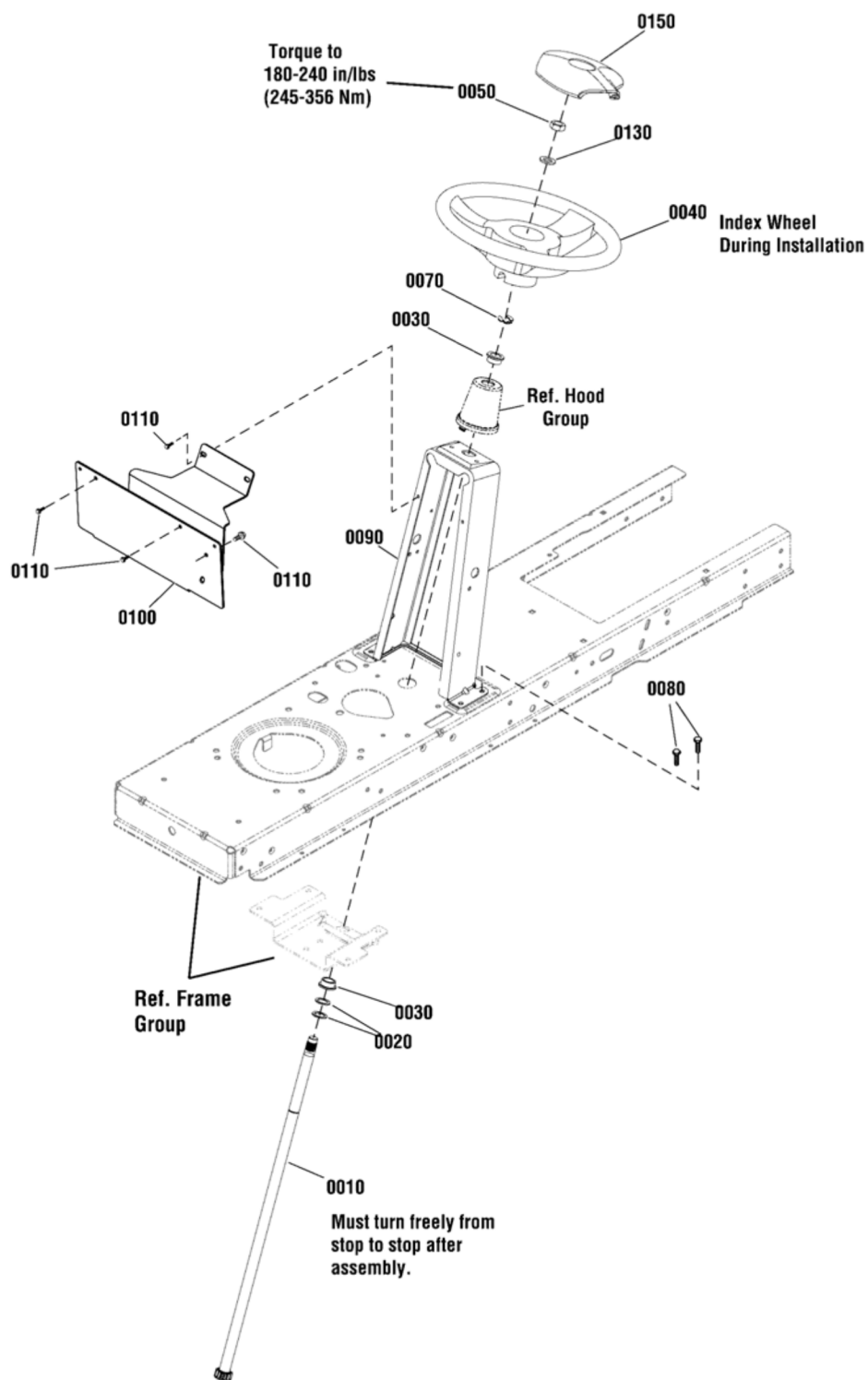
The above parts group applies to the following Mfg. Nos.:

2691105-00 - ELT2242RDF
2691106-00 - ELT2642RDF
2691121-00 - ELT17538RDF
2691122-00 - ELT1838RDF

Steering Group

885822a

NOTE: Unless noted otherwise, use the standard hardware torque specification chart.



The above parts group applies to the following Mfg. Nos.:

2691105-00 - ELT2242RDF
 2691105-01 - ELT2242RDF
 2691106-00 - ELT2642RDF
 2691106-01 - ELT2642RDF
 2691121-00 - ELT17538RDF

2691121-01 - ELT17538RDF
 2691122-00 - ELT1838RDF
 2691122-01 - ELT1838RDF

Steering Group

| REF NO | PART NO. | QTY. | DESCRIPTION |
|--------|------------|------|--|
| 0010 | 1727813SM | 1 | SHAFT, Steering Gear & Spline Yellow |
| 0020 | 1960114SM | 2 | WASHER, 3/4 x 1 |
| 0030 | 1729665SM | 2 | BUSHING, Steering |
| 0040 | 1728069SM | 1 | STEERING WHEEL |
| 0050 | 1960576SM | 1 | NUT, Hex Lock, ESNA Light, 5/8-18, Thin |
| 0070 | 1611710SM | 1 | RING, Klipring Extension |
| 0080 | 1930601SM | 4 | SCREW, Hex Washer Head, Taptite, 5/16-18 x 5/8 |
| 0090 | 885835BMYP | 1 | TOWER |
| 0100 | 885833BMYP | 1 | BRACKET, Tank |
| 0110 | 1925003SM | 2 | CAPSCREW, Hex Head, Taptite, 1/4-20 x 1/2 |
| 0130 | 1924366SM | 1 | WASHER, 5/8 x 1-1/8 |
| 0150 | 1722319SM | 1 | CAP, Steering Wheel, Plain |

Not for
Reproduction

Footnotes

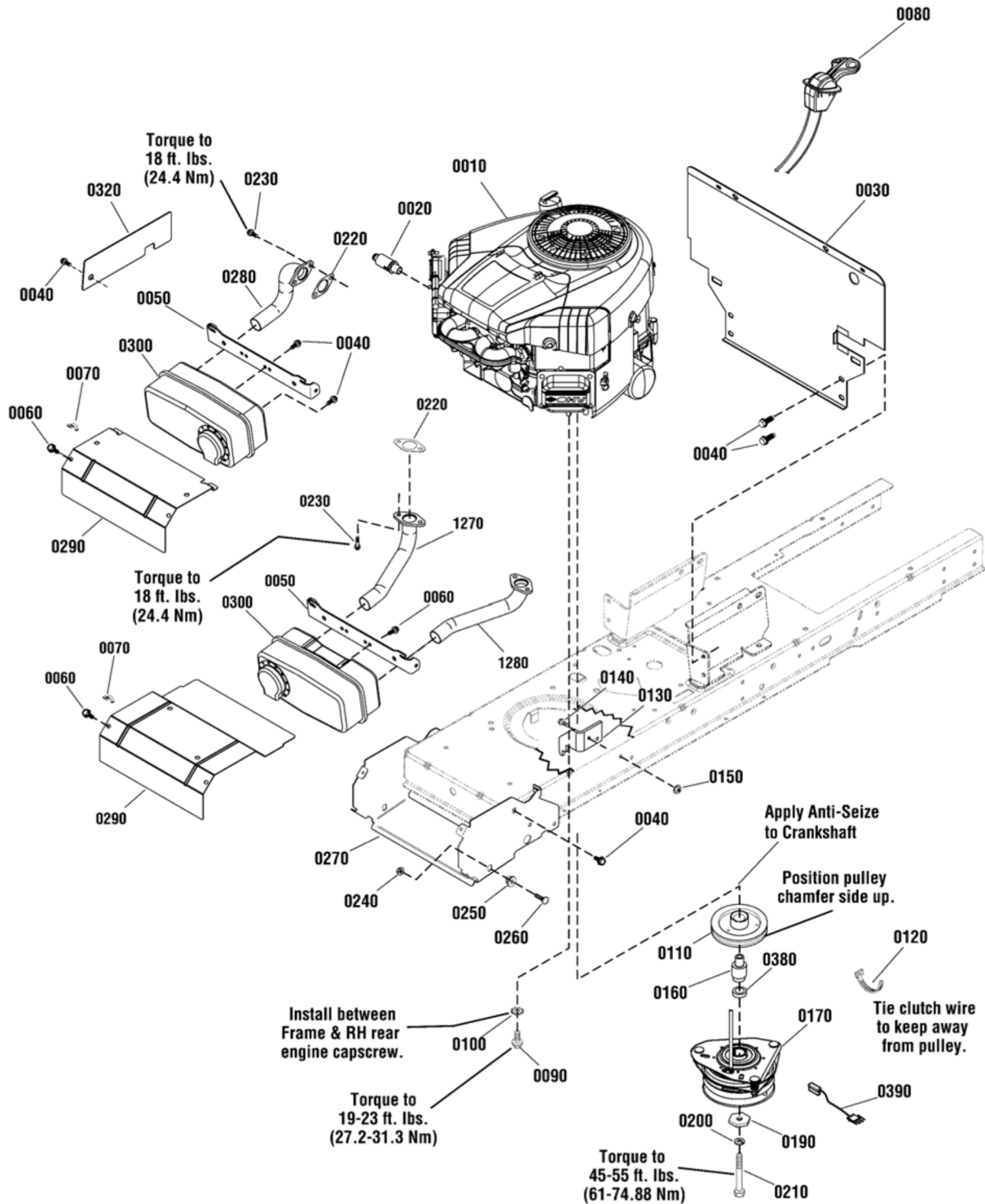
The above parts group applies to the following Mfg. Nos.:

| | |
|--------------------------|--------------------------|
| 2691105-00 - ELT2242RDF | 2691121-01 - ELT17538RDF |
| 2691105-01 - ELT2242RDF | 2691122-00 - ELT1838RDF |
| 2691106-00 - ELT2642RDF | 2691122-01 - ELT1838RDF |
| 2691106-01 - ELT2642RDF | |
| 2691121-00 - ELT17538RDF | |

Engine Group

NOTE: Unless noted otherwise, use the standard hardware torque specification chart.

885927



The above parts group applies to the following Mfg. Nos.:

- | | |
|--------------------------|--------------------------|
| 2691105-00 - ELT2242RDF | 2691121-01 - ELT17538RDF |
| 2691105-01 - ELT2242RDF | 2691122-00 - ELT1838RDF |
| 2691106-00 - ELT2642RDF | 2691122-01 - ELT1838RDF |
| 2691106-01 - ELT2642RDF | |
| 2691121-00 - ELT17538RDF | |

Engine Group

| REF NO | PART NO. | QTY. | DESCRIPTION |
|--------|----------------|------|--|
| 0010 | 31G777-0204-B1 | 1 | * ENGINE, 17.5 Gross HP Briggs & Stratton, Single Intek (Engine Model: 31G777-0204-B1) |
| 0010 | 405577-3804-B1 | 1 | * ENGINE, 18 Gross HP Briggs & Stratton, Twin Intek (Engine Model: 405577-3804-B1) |
| 0010 | 407777-0001-B1 | 1 | * ENGINE, 22 Gross HP Briggs & Stratton, Twin Intek (Engine Model: 407777-0001-B1) |
| 0010 | 44P777-0187-B1 | 1 | * ENGINE, 26 Gross HP Briggs & Stratton, Twin Intek (Engine Model: 44P777-0187-B1) |
| 0020 | 1750159YP | 1 | VALVE, Shut Off Oil Drain |
| 0030 | 885836BMYP | 1 | HEAT SHIELD |
| 0040 | 1930601SM | 10 | SCREW, Hex Washer Head, Taptite, 5/16-18 x 5/8 |
| 0050 | 1727976SM | 1 | SUPPORT, Muffler |
| 0060 | 1925003SM | 2 | SCREW, Hex Washer Head, Taptite, 1/4-20 x 1/2 (Qty 4 used on Twin) |
| 0070 | 2834683SM | 1 | WIRE CLIP |
| 0080 | 1751734YP | 1 | THROTTLE CONTROL, Choke-A-Matic (Single) |
| 0080 | 1736868YP | 1 | THROTTLE CONTROL, Double |
| 0090 | 2827187SM | 4 | SCREW, Hex Washer, Taptite, 3/8-16 x 1 |
| 0100 | 2820427SM | 1 | LOCKWASHER, External Tooth |
| 0110 | 1732576SM | 1 | PULLEY & HUB ASSEMBLY, Engine |
| 0120 | 1701011SM | 2 | TIE, Self Locking |
| 0130 | 885535AYP | 1 | BRACKET, Electric Clutch Torque |
| 0140 | 1921332SM | 2 | CAPSCREW, Hex Head, 5/16-18 x 3/4, G5 |
| 0150 | 1931277SM | 2 | NUT, Hex Flange, Whiz Lock, 5/16-18 |
| 0160 | 885679YP | 1 | SPACER, Electric Clutch |
| 0170 | 885680YP | 1 | CLUTCH, Electric |
| 0190 | 1708264SM | 1 | WASHER, 7/16 |
| 0200 | 1918199SM | 1 | LOCKWSHER, Spring |
| 0210 | 7102075YP | 1 | CAPSCREW, Hex Head, 7/16-20 x 5 |
| 0220 | 1731214SM | 1 | GASKET, Exhaust (Qty 2 used on Twin) |
| 0230 | 690341 | 2 | ** SCREW, Hex SEMS Lock Washer 5/16-18 x 7/8 (Qty 4 used on Twin) |
| 0240 | 1931277SM | 2 | NUT, Hex Flange, 5/16-18 |
| 0250 | 1728086SM | 2 | PIVOT, Hood |
| 0260 | 1931335SM | 2 | BOLT, Carriage, 5/16-18 x 1 |
| 0270 | 1727982ASM | 1 | BRACKET, Muffler |
| 0280 | 1728959SM | 1 | EXHAUST PIPE, Single (Single) |
| 0290 | 1727996ASM | 1 | HEAT SHIELD, Single (Single) |
| 0290 | 1727997ASM | 1 | HEAT SHIELD, Twin (Twin) |
| 0300 | 885615YP | 1 | MUFFLER, Single (Single) |
| 0300 | 1727994SM | 1 | MUFFLER, Twin (Use on 18 Gross HP) |
| 0300 | 885954YP | 1 | MUFFLER, Twin (Use on 22 & 26 Gross HP) |
| 0320 | 1736025BMYP | 1 | GUARD, Pulley |
| 0380 | 885810YP | 1 | SPACER, Electric Clutch |
| 0390 | 885815YP | 1 | HARNESS, Ogura |
| 1270 | 1727979SM | 1 | EXHAUST PIPE, RH (Twin) |
| 1280 | 1727980SM | 1 | EXHAUST PIPE, LH (Twin) |

Footnotes

Note* To verify your specific engine model, please reference the ID Tag located on your engine. See your local Briggs & Stratton distributor for parts and service.

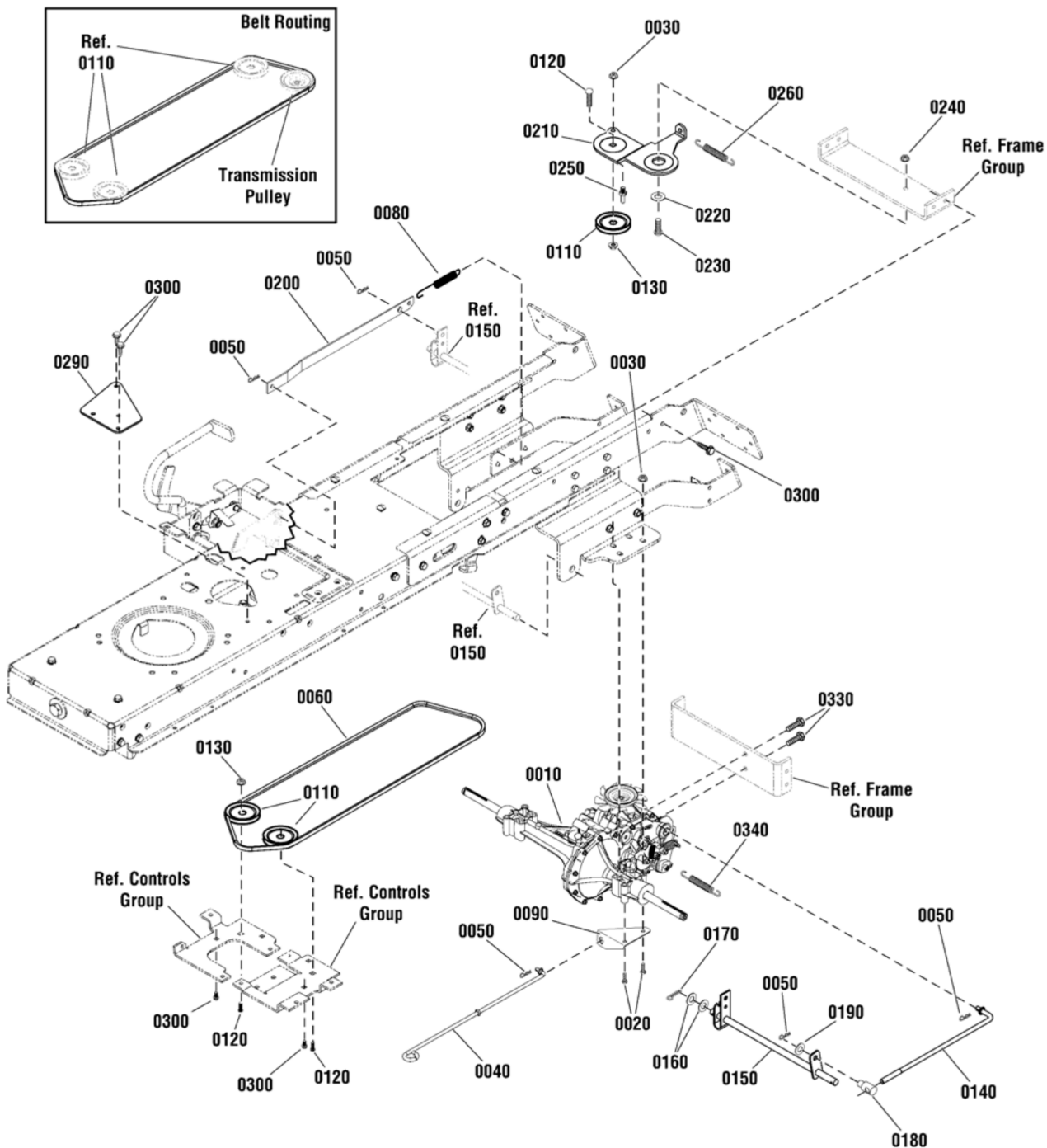
The above parts group applies to the following Mfg. Nos.:

| | |
|--------------------------|--------------------------|
| 2691105-00 - ELT2242RDF | 2691121-01 - ELT17538RDF |
| 2691105-01 - ELT2242RDF | 2691122-00 - ELT1838RDF |
| 2691106-00 - ELT2642RDF | 2691122-01 - ELT1838RDF |
| 2691106-01 - ELT2642RDF | |
| 2691121-00 - ELT17538RDF | |

Transmission Group

885706a

NOTE: Unless noted otherwise, use the standard hardware torque specification chart.



The above parts group applies to the following Mfg. Nos.:

2691105-00 - ELT2242RDF
 2691105-01 - ELT2242RDF
 2691106-00 - ELT2642RDF
 2691106-01 - ELT2642RDF
 2691121-00 - ELT17538RDF

2691121-01 - ELT17538RDF
 2691122-00 - ELT1838RDF
 2691122-01 - ELT1838RDF

Transmission Group

| REF NO | PART NO. | QTY. | DESCRIPTION |
|--------|------------|------|---|
| 0010 | 885528YP | 1 | * TRANSMISSION, Hydro Gear, 610 |
| 0020 | 1923141SM | 4 | SCREW, Hex Head Flange Lock, 5/16-18 x 2-3/4, G5 |
| 0030 | 1931277SM | 4 | NUT, Hex Flange, Whiz Lock, 5/16-18 |
| 0040 | 885436YP | 1 | LEVER, Roll Release |
| 0050 | 1722460SM | 5 | PIN, Quick |
| 0060 | 885495YP | 1 | BELT, Secondary (81.37" EL, HA section) |
| 0080 | 165X75MA | 1 | SPRING, Extension |
| 0090 | 885868BMYP | 1 | BRACKET, Roll Release |
| 0110 | 885645YP | 3 | PULLEY, Idler |
| 0120 | 1931352SM | 3 | BOLT, Carriage, Short Neck, 3/8-16 x 1-1/2, G5 |
| 0130 | 015X84MA | 3 | NUT, Hex Flange, Centerlock, 3/8-16 |
| 0140 | 885476YP | 1 | SPEED CONTROL, Short Link |
| 0150 | 885477AYP | 1 | SPEED CONTROL ASSEMBLY |
| 0160 | 017X91MA | 2 | WASHER, Flat, 13/16 |
| 0170 | 1960074SM | 1 | PIN, Cotter |
| 0180 | 021920ZMA | 1 | NUT, Adjusting |
| 0190 | 017X53MA | 1 | WASHER, Flat, .41 |
| 0200 | 885480AYP | 1 | LINK, Speed Control |
| 0210 | 885409AYP | 1 | BRACKET, Idler, Rear |
| 0220 | 1727935SM | 1 | SPACER, Pivot |
| 0230 | 1931335SM | 1 | BOLT, Carriage, Short Neck, 5/16-18 x 1, G5 |
| 0240 | 1931277SM | 2 | NUT, Hex Flange, Whiz Lock, 5/16-18 |
| 0250 | 885077YP | 1 | BELT GUIDE |
| 0260 | 1731939SM | 1 | SPRING, Extension |
| 0290 | 885953BMYP | 1 | PLATE, Front Fixed Idler (Only used on Rev - 00) |
| 0300 | 703228 | 4 | CAPSCREW, Hex Washer Head, Taptite, 5/16-18 x 3/4 (Only 2 used on Rev - 00) |
| 0330 | 703228 | 2 | CAPSCREW, Hex Washer Head, Taptite, 5/16-18 x 3/4 |
| 0340 | 165X92MA | 1 | SPRING, Extension |

Footnotes

Note* See your local authorized dealership for parts and warranty or contact Hydro Gear at www.hydro-gear.com/Support/NorthAmerica.aspx (U.S. 1-877-728-7410 Int'l 32 (0) 12 670 631)

The above parts group applies to the following Mfg. Nos.:

| | |
|--------------------------|--------------------------|
| 2691105-00 - ELT2242RDF | 2691121-01 - ELT17538RDF |
| 2691105-01 - ELT2242RDF | 2691122-00 - ELT1838RDF |
| 2691106-00 - ELT2642RDF | 2691122-01 - ELT1838RDF |
| 2691106-01 - ELT2642RDF | |
| 2691121-00 - ELT17538RDF | |

Transmission SERVICE PARTS - Hydro Gear 324-0610

| REF NO | PART NO. | QTY. | DESCRIPTION |
|--------|----------|------|---|
| 0010 | ---- | 1 | * MAIN HOUSING ASSEMBLY |
| 0020 | ---- | 1 | * SIDE HOUSING ASSEMBLY |
| 0030 | ---- | 1 | * CENTERSECTION ASSEMBLY |
| 0040 | ---- | 1 | * TRUNNION, Swashplate |
| 0050 | ---- | 2 | * BLOCK ASSEMBLY |
| 0060 | ---- | 1 | * SEALANT, 10.1 oz. (Not Illustrated) |
| 0070 | ---- | 14 | * SCREW, Hex Washer, 1/4-20 x 1-1/8 |
| 0090 | 1752461 | 1 | SHAFT, Input |
| 0100 | 1715270 | 1 | RING, Retaining |
| 0110 | 1752462 | 1 | WASHER, Flat, 1.23 x 1.57 x .04 |
| 0120 | 1752463 | 3 | RING, RETAINING |
| 0130 | 1752464 | 1 | SEAL, LIP 17 x 40 x 12 |
| 0140 | 1752465 | 1 | BEARING, BALL 17 x 40 x 12 |
| 0160 | ---- | 1 | * SCREW, Hex Flange, With Patch, 5/16-24 x 15/16 |
| 0170 | ---- | 1 | * SEAL, Lip, 18 x 32 x 7 (Not a servicable part, order kit # 1270) |
| 0180 | ---- | 1 | * ARM, Control |
| 0190 | 1715144 | 2 | * BEARING, Thrust, 30 x 52 x 13 |
| 0240 | ---- | 1 | * SHAFT, Motor |
| 0270 | ---- | 1 | * GEAR, Pinion, 12T |
| 0280 | ---- | 1 | * GEAR, 10T/49T |
| 0290 | ---- | 1 | * GEAR, Jackshaft, 10T |
| 0310 | ---- | 2 | * BUSHING, Sleeve (Inboard) |
| 0320 | ---- | 2 | * BUSHING, Sleeve, 3/4 x 1-1.571 x 5/8 |
| 0330 | ---- | 2 | * WASHER, Flat, 3/4 x 1-1/2 x 7/64 |
| 0340 | ---- | 2 | * SEAL, Lip, 3/4 x 1.577 x 1/4 (Not a servicable part, order kit # 1270) |
| 0350 | ---- | 1 | * SHAFT, Axle, 3/4 x 11.39 (Key, RH) |
| 0360 | ---- | 1 | * SHAFT, AXLE, 3/4 x 16.99 (Key, LH) |
| 0370 | ---- | 1 | * KIT, Miter Gear |
| 0400 | ---- | 2 | * RING, Retaining Spiral |
| 0410 | ---- | 1 | * PIN, Jackshaft, 1/2 x 2.43 |
| 0420 | ---- | 1 | * MAGNET, Ring |
| 0440 | 1717965 | 2 | SCREW, Hex Flange, 3/8-24 x 2-1/2 |
| 0480 | ---- | 1 | * ROD, Actuator Bypass |
| 0490 | ---- | 1 | * ARM, Bypass |
| 0500 | ---- | 1 | * RING, Retaining, External, 1/4 |
| 0510 | ---- | 1 | * SEAL, Lip, 1/4 x 3/4 x 1/4 TC (Not a servicable part, order kit # 1270) |
| 0520 | ---- | 1 | * WASHER, Flat, 5/8 x 1 x 1/2 |
| 0530 | ---- | 1 | * RING, Retaining |
| 0540 | ---- | 1 | * BUSHING, Center Block |
| 0550 | ---- | 1 | * SPRING, Block |
| 0560 | ---- | 1 | * WASHER, Thrust, .59 x .79 x .04 |
| 0580 | ---- | 1 | * BRAKE YOKE KIT |
| 0590 | ---- | 1 | * DISK, Brake |
| 0600 | ---- | 2 | * PUCK, Brake |

Footnotes

Note* See your local authorized dealership for parts and warranty or contact Hydro Gear at www.hydro-gear.com/Support/NorthAmerica.aspx (U.S. 1-877-728-7410 Int'l 32 (0) 12 670 631)

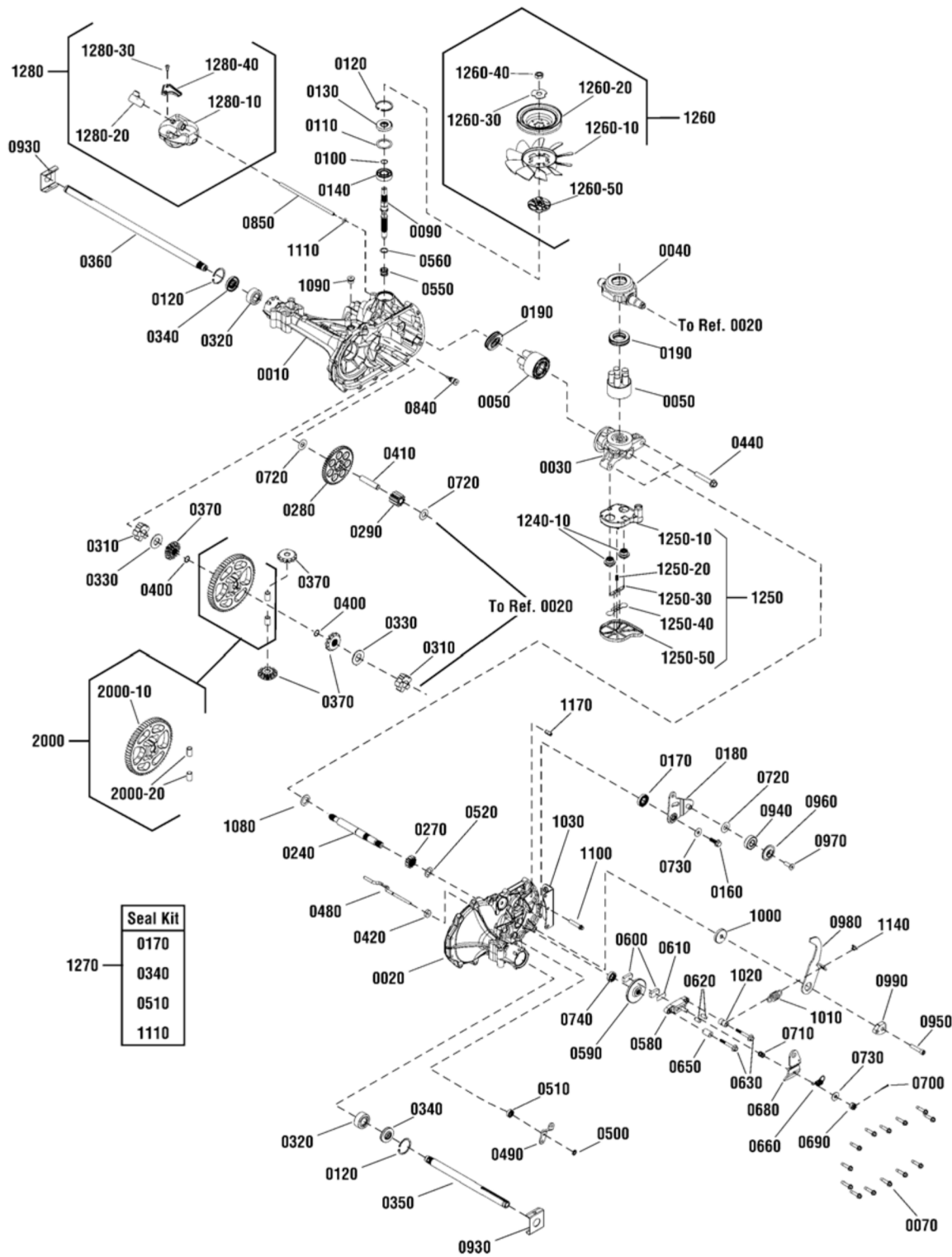
The above parts group applies to the following Mfg. Nos.:

| | |
|--------------------------|--------------------------|
| 2691105-00 - ELT2242RDF | 2691121-01 - ELT17538RDF |
| 2691105-01 - ELT2242RDF | 2691122-00 - ELT1838RDF |
| 2691106-00 - ELT2642RDF | 2691122-01 - ELT1838RDF |
| 2691106-01 - ELT2642RDF | |
| 2691121-00 - ELT17538RDF | |

Transmission SERVICE PARTS - Hydro Gear 324-0610

885528

NOTE: Unless noted otherwise, use the standard hardware torque specification chart.



The above parts group applies to the following Mfg. Nos.:

| | |
|--------------------------|--------------------------|
| 2691105-00 - ELT2242RDF | 2691121-01 - ELT17538RDF |
| 2691105-01 - ELT2242RDF | 2691122-00 - ELT1838RDF |
| 2691106-00 - ELT2642RDF | 2691122-01 - ELT1838RDF |
| 2691106-01 - ELT2642RDF | |
| 2691121-00 - ELT17538RDF | |

Transmission SERVICE PARTS - Hydro Gear 324-0610

| REF NO | PART NO. | QTY. | DESCRIPTION |
|---------|----------|------|--|
| 0610 | ---- | 1 | * PLATE, Puck |
| 0620 | ---- | 2 | * PIN, Brake Actuating |
| 0630 | ---- | 2 | * SCREW, Hex Head, With Patch, 1/4-20 x 2 |
| 0650 | 1715199 | 1 | SPACER, .26 x .57 x .87 |
| 0660 | ---- | 1 | * SPRING, Brake arm Bias |
| 0670 | 1706160 | 1 | SCREW, Square Head, Ribbed, 5/16-24 |
| 0680 | ---- | 1 | * ARM, Brake |
| 0690 | ---- | 1 | * NUT, Castle, 5/16-24 |
| 0700 | ---- | 1 | * PIN, Cotter, 3/32 x 3/4 |
| 0710 | ---- | 1 | * SPRING, Compression Brake, Anti-Drag |
| 0720 | ---- | 3 | * WASHER, Flat, .51 x 1.0 x .03 |
| 0730 | ---- | 2 | * WASHER, Flat, .34 x .88 x .06 |
| 0740 | ---- | 1 | * KIT, Seal |
| 0840 | ---- | 1 | * FITTING, 5/16 SAE 5/32 TUBE |
| 0850 | ---- | 1 | * HOSE, Expansion Tank, 7.56 In. |
| 0930 | 1752466 | 2 | SPRING CLIP, Housing Thrust (3/4" Axle) |
| 0940 | ---- | 1 | * BEARING, Ball, .62 x 1.38 x .44 |
| 0950 | ---- | 1 | * CAPSCREW, Socket Head, 5/16-24 x 1-1/2 |
| 0960 | ---- | 1 | * SPACER, Locating |
| 0970 | ---- | 1 | * SCREW, Countersunk, 5/16-18 x 1 |
| 0980 | ---- | 1 | * ARM, Return |
| 0990 | ---- | 1 | * PUCK, Adjusting |
| 1000 | ---- | 1 | * WASHER, Flat, .32 x 1.60 x .24 |
| 1010 | ---- | 1 | * SPRING, Extension, Double Loop |
| 1020 | ---- | 1 | * SPACER, .26 x .56 x .87 |
| 1030 | ---- | 1 | * BRACKET, Torque |
| 1080 | ---- | 1 | * WASHER, Flat, .71 x 1.16 x .04 |
| 1090 | ---- | 1 | * PLUG, 9/16-18 (METAL) |
| 1100 | ---- | 1 | * SCREW, Torx Head, 5/16-18 x 1-1/2 |
| 1110 | ---- | 1 | * O-RING, .299 x .505 x .103 (Not a serviceable part, order kit # 1270) |
| 1140 | ---- | 1 | * SPRING, Guide |
| 1170 | ---- | 1 | * PIN, Spring, .304 x .75 |
| 1240 | ---- | 1 | * CENTERSECTION ASSEMBLY, Filter, Bypass (Not Illustrated) (Includes Ref. Nos. 0030, 1240-10 & 1250) |
| 1240-10 | ---- | 1 | * CENTERSECTION (5-Piston) (Not a serviceable part, order kit #1240) |
| 1250 | ---- | 1 | * FILTER ASSEMBLY (Includes Ref. Nos. 1250-10, 1250-20, 1250-30, 1250-40 & 1250-50) |
| 1250-10 | ---- | 1 | * BASE, Filter, With Poppet (Not a serviceable part, order kit #1250) |
| 1250-20 | ---- | 1 | * SPRING, Bypass, 1/2" (Not a serviceable part, order kit #1250) |
| 1250-30 | ---- | 1 | * ACTUATOR, Bypass (Not a serviceable part, order kit #1250) |
| 1250-40 | ---- | 1 | * DEFLECTOR (Not a serviceable part, order kit #1250) |
| 1250-50 | ---- | 1 | * BOTTOM, Filter (Not a serviceable part, order kit #1250) |
| 1260 | 1752467 | 1 | FAN & PULLEY KIT (Includes Ref. Nos. 1260-10, 1260-20, 1260-30, 1260-40 & 1260-50) |
| 1260-10 | ---- | 1 | * FAN, 7" (10 BLADE) (Not a serviceable part, order kit #1260) |
| 1260-20 | ---- | 1 | * PULLEY, Cupped, 4-1/2" (Not a serviceable part, order kit #1260) |

Footnotes

Note* See your local authorized dealership for parts and warranty or contact Hydro Gear at www.hydro-gear.com/Support/NorthAmerica.aspx (U.S. 1-877-728-7410 Int'l 32 (0) 12 670 631)

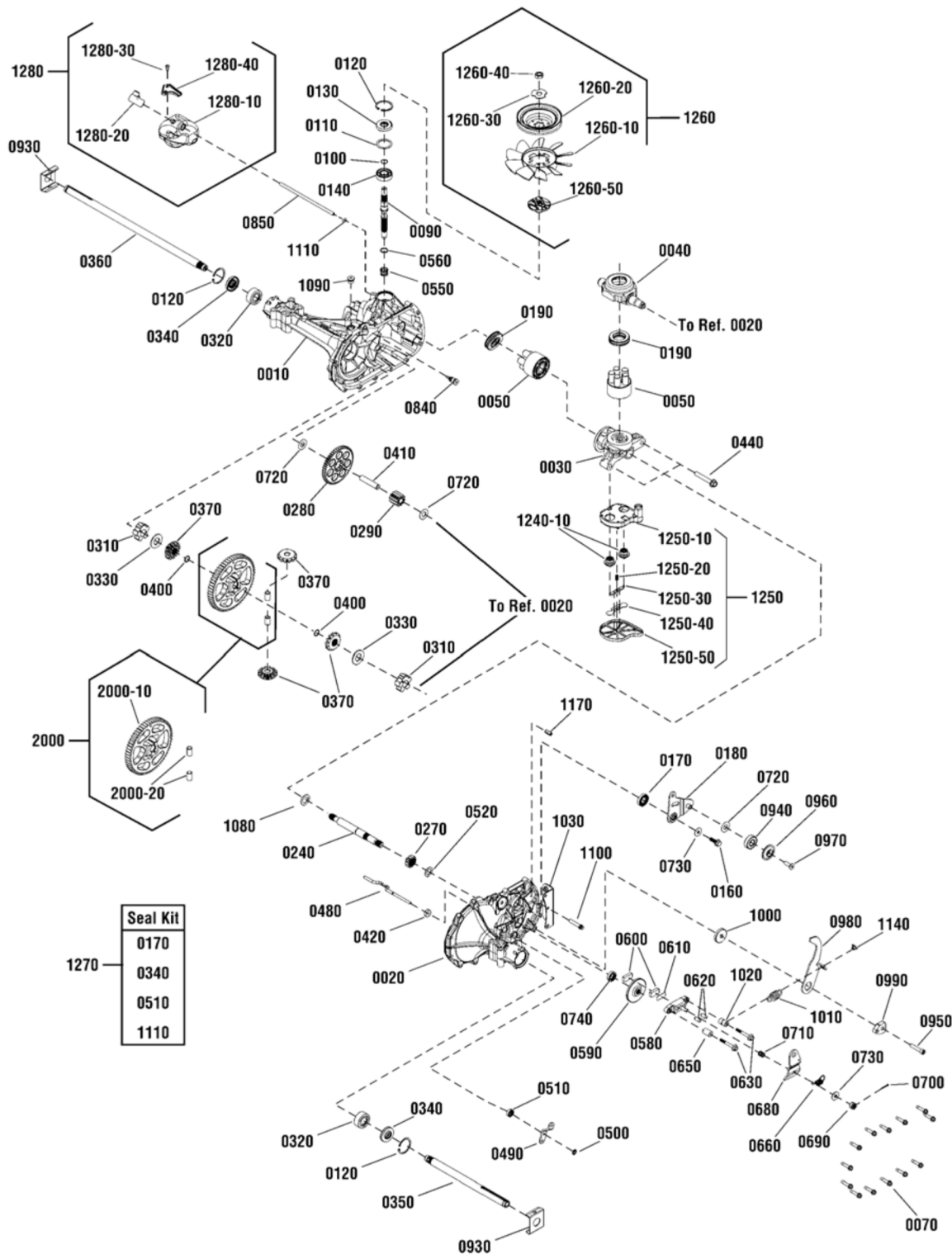
The above parts group applies to the following Mfg. Nos.:

| | |
|--------------------------|--------------------------|
| 2691105-00 - ELT2242RDF | 2691121-01 - ELT17538RDF |
| 2691105-01 - ELT2242RDF | 2691122-00 - ELT1838RDF |
| 2691106-00 - ELT2642RDF | 2691122-01 - ELT1838RDF |
| 2691106-01 - ELT2642RDF | |
| 2691121-00 - ELT17538RDF | |

Transmission SERVICE PARTS - Hydro Gear 324-0610

885528

NOTE: Unless noted otherwise,
use the standard hardware torque
specification chart.



| Seal Kit | |
|----------|--|
| 0170 | |
| 0340 | |
| 0510 | |
| 1110 | |

The above parts group applies to the following Mfg. Nos.:

- | | |
|--------------------------|--------------------------|
| 2691105-00 - ELT2242RDF | 2691121-01 - ELT17538RDF |
| 2691105-01 - ELT2242RDF | 2691122-00 - ELT1838RDF |
| 2691106-00 - ELT2642RDF | 2691122-01 - ELT1838RDF |
| 2691106-01 - ELT2642RDF | |
| 2691121-00 - ELT17538RDF | |

Transmission SERVICE PARTS - Hydro Gear 324-0610

| REF NO | PART NO. | QTY. | DESCRIPTION |
|---------|----------|------|---|
| 1260-50 | ---- | 1 | * HUB, Pulley (Not a serviceable part, order kit #1260) |
| 1270 | 1752468 | 1 | SEAL & O-RING KIT (Includes Ref. Nos. 0170, 0340, 0510 & 1110) |
| 1280 | 1752469 | 1 | EXPANSION TANK KIT (Includes Ref. Nos. 1280-10, 1280-20, 1280-30 & 1280-40) |
| 1280-10 | ---- | 1 | * TANK, Expansion (Not a serviceable part, order kit #1280) |
| 1280-20 | ---- | 1 | * CAP, Expansion Tank (Not a serviceable part, order kit #1280) |
| 1280-30 | ---- | 1 | * BOLT, Self Tapping, 10-32 x 1/2 (Not a serviceable part, order kit #1280) |
| 1280-40 | ---- | 1 | * BRACKET, Expansion Tank (Not a serviceable part, order kit #1280) |
| 2000 | ---- | 1 | * KIT, 60T Bull Gear Diff Pins (Includes Ref. Nos. 2000-10 & 2000-20) |
| 2000-10 | ---- | 1 | * GEAR, 60T |
| 2000-20 | ---- | 2 | * PIN, 1/2 |

Not for
Reproduction

Footnotes

Note* See your local authorized dealership for parts and warranty or contact Hydro Gear at www.hydro-gear.com/Support/NorthAmerica.aspx (U.S. 1-877-728-7410 Int'l 32 (0) 12 670 631)

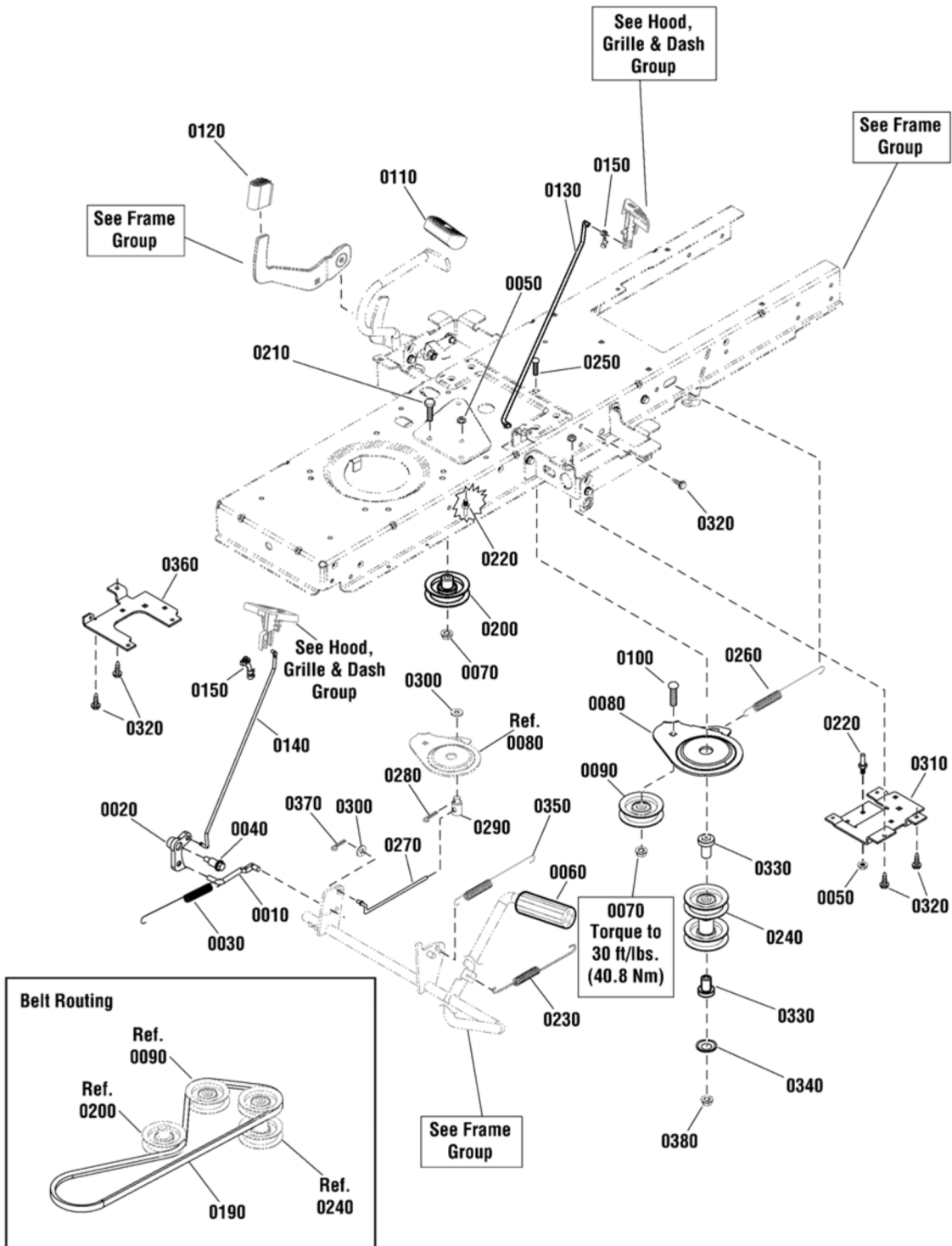
The above parts group applies to the following Mfg. Nos.:

| | |
|--------------------------|--------------------------|
| 2691105-00 - ELT2242RDF | 2691121-01 - ELT17538RDF |
| 2691105-01 - ELT2242RDF | 2691122-00 - ELT1838RDF |
| 2691106-00 - ELT2642RDF | 2691122-01 - ELT1838RDF |
| 2691106-01 - ELT2642RDF | |
| 2691121-00 - ELT17538RDF | |

Controls Group

NOTE: Unless noted otherwise,
use the standard hardware torque
specification chart.

885907



The above parts group applies to the following Mfg. Nos.:

| | |
|--------------------------|--------------------------|
| 2691105-00 - ELT2242RDF | 2691121-01 - ELT17538RDF |
| 2691105-01 - ELT2242RDF | 2691122-00 - ELT1838RDF |
| 2691106-00 - ELT2642RDF | 2691122-01 - ELT1838RDF |
| 2691106-01 - ELT2642RDF | |
| 2691121-00 - ELT17538RDF | |

Controls Group

| REF NO | PART NO. | QTY. | DESCRIPTION |
|--------|------------|------|--|
| 0010 | 1727899SM | 1 | ROD, Cruise Latch, 2.83" |
| 0020 | 1727897SM | 1 | LATCH, Cruise |
| 0030 | 2159181SM | 1 | SPRING, Extension 7-3/4 |
| 0040 | 1728976SM | 1 | BOLT, Shoulder, 5/16-18 x 1-5/8 |
| 0050 | 015X79MA | 3 | NUT, Flange, 5/16-18, G5 |
| 0060 | 1727261SM | 1 | PEDAL, Brake Rubber |
| 0070 | 703158 | 2 | NUT, Hex Flange, ESNA, 3/8-16 |
| 0080 | 885410AYP | 1 | BRACKET, Idler Front Movable |
| 0090 | 885645YP | 1 | PULLEY, 3 OD Plastic |
| 0100 | 703227 | 1 | BOLT, Carriage, 3/8-16 x 1-1/4 |
| 0110 | 1721675SM | 1 | PAD, Foot Pedal, Forward |
| 0120 | 1727259SM | 1 | PAD, Foot Pedal, Reverse |
| 0130 | 1727267SM | 1 | ROD, Parking Brake, 16-3/8" |
| 0140 | 1738760YP | 1 | ROD, Cruise Latch, 17" |
| 0150 | 1728111SM | 2 | CLIP, Linkage, Black |
| 0190 | 885895YP | 1 | BELT, Primary, M/D (47.89" EL, HA Section) |
| 0200 | 885894YP | 1 | IDLER, Backside |
| 0210 | 1921971SM | 1 | CAPSCREW, Hex Head, 3/8-16 x 1-3/4, G5 |
| 0220 | 885534YP | 2 | BELT GUIDE |
| 0230 | 885421YP | 1 | SPRING, Extension |
| 0240 | 885426YP | 1 | PULLEY, Secondary Stack |
| 0250 | 885577YP | 1 | BOLT, Carriage, 3/8-16 x 5 |
| 0260 | 1729620SM | 1 | SPRING, Extension 7-1/2" |
| 0270 | 885683YP | 1 | ROD, Clutch |
| 0280 | 7091809YP | 1 | PIN, Cotter |
| 0290 | 021920ZMA | 1 | NUT, Adjusting |
| 0300 | 71072MA | 2 | WASHER, Flat, 3/8 |
| 0310 | 885684BMYP | 1 | BRACKET, Stack Pulley, Left |
| 0320 | 703228 | 4 | SCREW, Hex Washer Head, Taptite, 5/16-18 x 3/4 |
| 0330 | 885575YP | 2 | SPACER |
| 0340 | 1931942SM | 1 | NUT, Push Pal, 3/8 |
| 0350 | 1721995SM | 1 | SPRING, Extension |
| 0360 | 885685BMYP | 1 | BRACKET, Stack Pulley, Right |
| 0370 | 703312 | 1 | PIN, Cotter |
| 0380 | 015X84MA | 1 | NUT, Hex Flange, Centerlock, 3/8-16 |

Footnotes

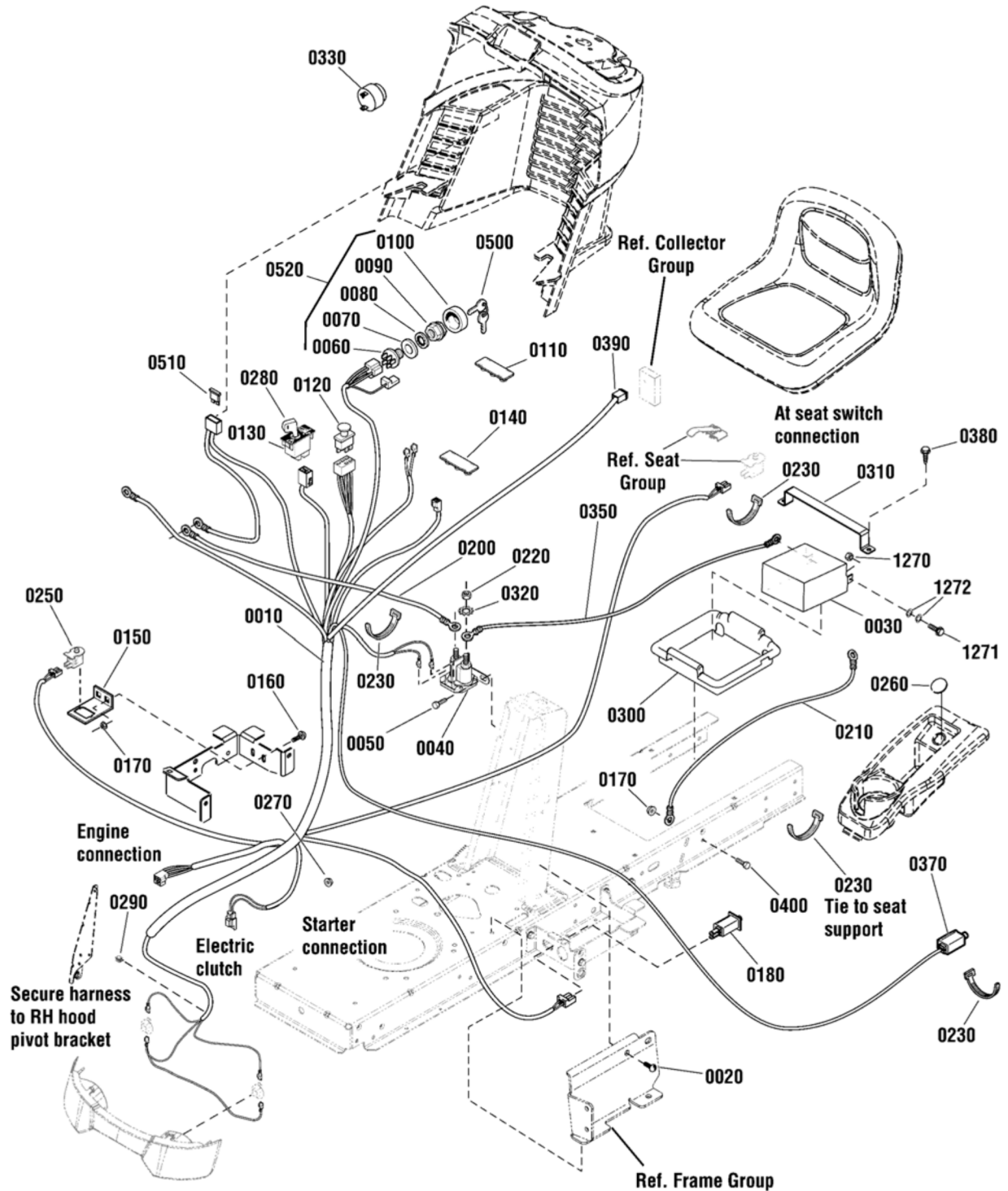
The above parts group applies to the following Mfg. Nos.:

| | |
|--------------------------|--------------------------|
| 2691105-00 - ELT2242RDF | 2691121-01 - ELT17538RDF |
| 2691105-01 - ELT2242RDF | 2691122-00 - ELT1838RDF |
| 2691106-00 - ELT2642RDF | 2691122-01 - ELT1838RDF |
| 2691106-01 - ELT2642RDF | |
| 2691121-00 - ELT17538RDF | |

Electrical Group

NOTE: Unless noted otherwise, use the standard hardware torque specification chart.

885690



The above parts group applies to the following Mfg. Nos.:

- | | |
|--------------------------|--------------------------|
| 2691105-00 - ELT2242RDF | 2691121-01 - ELT17538RDF |
| 2691105-01 - ELT2242RDF | 2691122-00 - ELT1838RDF |
| 2691106-00 - ELT2642RDF | 2691122-01 - ELT1838RDF |
| 2691106-01 - ELT2642RDF | |
| 2691121-00 - ELT17538RDF | |

Electrical Group

| REF NO | PART NO. | QTY. | DESCRIPTION |
|--------|-----------|------|---|
| 0010 | 885691 | 1 | WIRING HARNESS |
| 0020 | 1930601 | 5 | CAPSCREW, Hex Washer Head, Taptite, 5/16-18 x 5/8 |
| 0030 | ---- | 1 | BATTERY, 12 Volt |
| 0040 | 1728963 | 1 | SOLENOID |
| 0050 | 1925003 | 2 | CAPSCREW, Hex Washer Head, Taptite, 1/4-20 x 1/2 |
| 0060 | 721108 | 1 | SWITCH ASSEMBLY, Ingition |
| 0070 | 2101025 | 1 | WASHER, 5/8 |
| 0080 | 1960547 | 1 | LOCKWASHER, Internal Tooth |
| 0090 | 1717549 | 1 | NUT, Hex Flange, 5/8-32 |
| 0100 | 1717550 | 1 | COVER, Switch |
| 0110 | 1729993 | 1 | PLUG, Hour Meter |
| 0120 | 1722887 | 1 | SWITCH, PTO Push |
| 0130 | 1726556 | 1 | SWITCH, RMO Module Only |
| 0140 | 1722611 | 2 | PLUG, Hole |
| 0150 | 1728026A | 1 | SUPPORT, RMO Switch |
| 0160 | 1931333 | 2 | BOLT, Carriage, 5/16-18 x 3/4 G5 |
| 0170 | 1931277 | 3 | NUT, Hex Flange Whiz Lock Small, 5/16-18 |
| 0180 | 7022886 | 1 | SWITCH, Push Button (NO / NC) |
| 0200 | 1721830 | 1 | CABLE, # 6 x 25, Red |
| 0210 | 1713163 | 1 | CABLE, # 6 x 26, Black |
| 0220 | 2860750 | 2 | NUT, Hex, KEPS, 5/16-24 |
| 0230 | 1701011 | 16 | TIE, Self Locking |
| 0250 | 1732004 | 1 | SWITCH, Push Button (NO) |
| 0260 | 1732007 | 1 | PLUG, Hole |
| 0270 | 1960294 | 1 | NUT, Hex Flange Whiz Lock Small, 1/4-20 |
| 0280 | 1726557 | 2 | KEY, RMO Module Plastic |
| 0290 | 2172434 | 1 | CLIP, Wire |
| 0300 | 885428 | 1 | CONTAINER, Battery |
| 0310 | 885511BM | 1 | HOLD DOWN, Battery |
| 0320 | 2820426 | 2 | LOCKWASHER, 5/16 |
| 0330 | 1720117 | 1 | BUZZER, Bag Full |
| 0350 | 885616 | 1 | CABLE, Battery |
| 0370 | 727831 | 1 | SWITCH, Bagger |
| 0380 | 1664847SM | 2 | SCREW, Hex Washer Head, Taptite, 5/16-18 x 3/4 |
| 0390 | 885692 | 1 | HARNESS, Bag Full |
| 0400 | 7091811 | 1 | CAPSCREW, Hex Flange, 5/16-18 x 5/8, G5 |
| 0500 | 1737837 | 1 | KEYS, Ignition |
| 0510 | ---- | 1 | * FUSE, 20 Amp |
| 0520 | 1686734 | 1 | SWITCH ASSEMBLY (Includes Ref Nos. 0060, 0070, 0080, 0090 & 0100) |
| 1270 | 51716 | 2 | NUT, M5 x 0.8 |

Footnotes

The above parts group applies to the following Mfg. Nos.:

| | |
|--------------------------|--------------------------|
| 2691105-00 - ELT2242RDF | 2691121-01 - ELT17538RDF |
| 2691105-01 - ELT2242RDF | 2691122-00 - ELT1838RDF |
| 2691106-00 - ELT2642RDF | 2691122-01 - ELT1838RDF |
| 2691106-01 - ELT2642RDF | |
| 2691121-00 - ELT17538RDF | |

Electrical Group

| REF NO | PART NO. | QTY. | DESCRIPTION |
|--------|----------|------|----------------------|
| 1271 | 52618 | 2 | SCREW, M5 x 0.8 x 12 |
| 1272 | 51713 | 4 | WASHER, M5 |

Not for
Reproduction

Footnotes

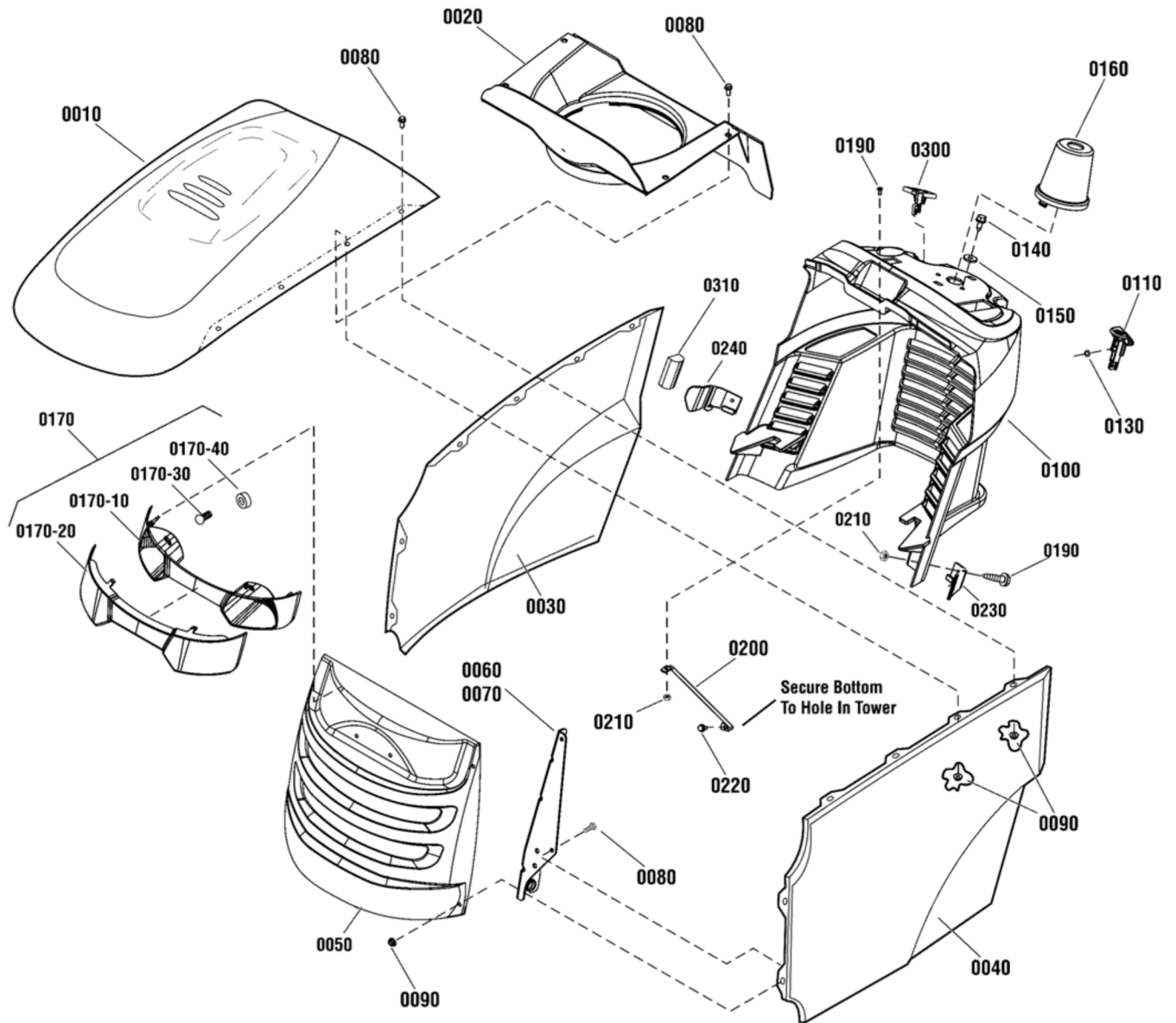
The above parts group applies to the following Mfg. Nos.:

| | |
|--------------------------|--------------------------|
| 2691105-00 - ELT2242RDF | 2691121-01 - ELT17538RDF |
| 2691105-01 - ELT2242RDF | 2691122-00 - ELT1838RDF |
| 2691106-00 - ELT2642RDF | 2691122-01 - ELT1838RDF |
| 2691106-01 - ELT2642RDF | |
| 2691121-00 - ELT17538RDF | |

Hood, Grille & Dash Group

885787a

NOTE: Unless noted otherwise,
use the standard hardware torque
specification chart.



The above parts group applies to the following Mfg. Nos.:

2691105-00 - ELT2242RDF
 2691105-01 - ELT2242RDF
 2691106-00 - ELT2642RDF
 2691106-01 - ELT2642RDF
 2691121-00 - ELT17538RDF

2691121-01 - ELT17538RDF
 2691122-00 - ELT1838RDF
 2691122-01 - ELT1838RDF

Hood, Grille & Dash Group

| REF NO | PART NO. | QTY. | DESCRIPTION |
|---------|------------|------|---|
| 0010 | 1722110CSM | 1 | HOOD, With Scoop |
| 0020 | 1755965YP | 1 | AIR DUCT, Plenum |
| 0030 | 1728029CSM | 1 | PANEL, Side, R.H. |
| 0040 | 1728030CSM | 1 | PANEL, Side, L.H. |
| 0050 | 1727297CSM | 1 | GRILLE |
| 0060 | 1727279ASM | 1 | HINGE, Hood, L.H. |
| 0070 | 1727280ASM | 1 | HINGE, Hood, R.H. |
| 0080 | 1960295SM | 12 | CAPSCREW, Hex Flange Whiz Lock, 1/4-20 x 5/8 |
| 0090 | 1930641SM | 12 | NUT, Hex Flange Whiz Lock Large, 1/4-20 |
| 0100 | 885583YP | 1 | CONSOLE |
| 0110 | 1728089SM | 1 | KNOB, Brake Lock, Red |
| 0130 | 1960518SM | 2 | PUSHNUT, 1/4 |
| 0140 | 1664847SM | 2 | CAPSCREW, Hex Washer Head, Taptite, 5/16-18 x 3/4 |
| 0150 | 1919381SM | 2 | WASHER, 5/16 |
| 0160 | 1727999SM | 1 | COVER |
| 0170 | 1727296SM | 1 | HEADLIGHT ASSEMBLY (Includes Ref. Nos. 0170-10, 0170-20, 0170-30 & 0170-40) |
| 0170-10 | 1728973SM | 1 | REFLECTOR |
| 0170-20 | 1728974SM | 1 | LENS, Headlight |
| 0170-30 | 1677371SM | 2 | BULB, Headlight, 1141-12V 21CP |
| 0170-40 | 1723451SM | 2 | SOCKET |
| 0190 | 1739942YP | 3 | SCREW, Pan Head Phillips, #10-24 x 7/8 |
| 0200 | 885435AYP | 1 | ROD, Bagger Support |
| 0210 | 1933896SM | 3 | NUT, Nylock, 10-24 |
| 0220 | 1925003SM | 1 | CAPSCREW, Hex Washer Head, Taptite, 1/4-20 x 1/2 |
| 0230 | 1732030SM | 1 | GUIDE, Hood, L.H. |
| 0240 | 1732031SM | 1 | GUIDE, Hood, R.H. |
| 0300 | 1728090SM | 1 | KNOB, Cruise Lock |
| 0310 | 1754094YP | 2 | POSITIONER, Hood |

Footnotes

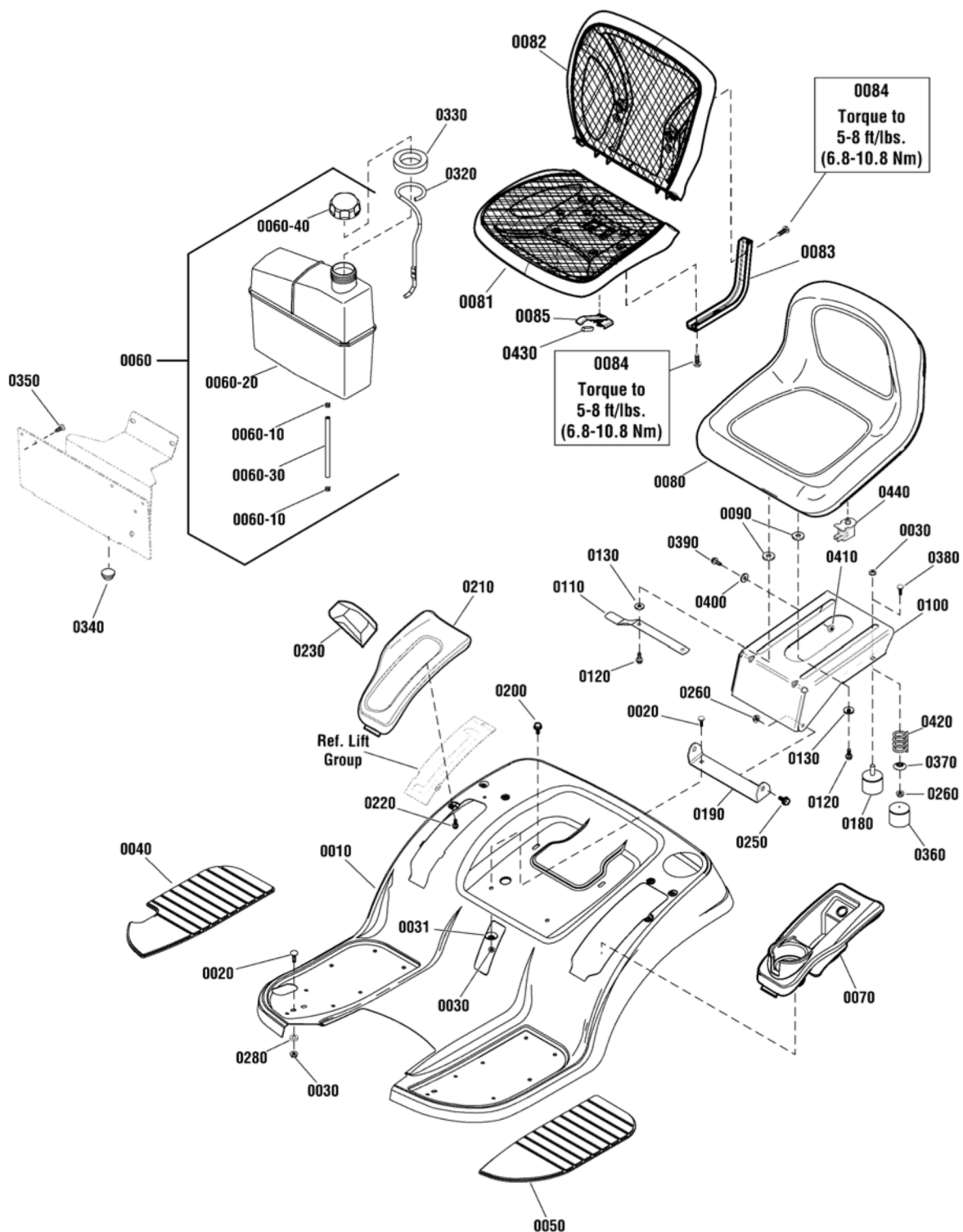
The above parts group applies to the following Mfg. Nos.:

| | |
|--------------------------|--------------------------|
| 2691105-00 - ELT2242RDF | 2691121-01 - ELT17538RDF |
| 2691105-01 - ELT2242RDF | 2691122-00 - ELT1838RDF |
| 2691106-00 - ELT2642RDF | 2691122-01 - ELT1838RDF |
| 2691106-01 - ELT2642RDF | |
| 2691121-00 - ELT17538RDF | |

Seat Deck & Fuel Tank Group

NOTE: Unless noted otherwise, use the standard hardware torque specification chart.

885939



The above parts group applies to the following Mfg. Nos.:

- | | |
|--------------------------|--------------------------|
| 2691105-00 - ELT2242RDF | 2691121-01 - ELT17538RDF |
| 2691105-01 - ELT2242RDF | 2691122-00 - ELT1838RDF |
| 2691106-00 - ELT2642RDF | 2691122-01 - ELT1838RDF |
| 2691106-01 - ELT2642RDF | |
| 2691121-00 - ELT17538RDF | |

Seat Deck & Fuel Tank Group

| REF NO | PART NO. | QTY. | DESCRIPTION |
|---------|-------------|------|---|
| 0010 | 885687CYP | 1 | DECK, Seat |
| 0020 | 1931333SM | 4 | BOLT, Carriage, 5/16-18 x 3/4 G5 |
| 0030 | 015X79MA | 4 | NUT, Hex Flange Whiz Lock Small, 5/16-18 |
| 0031 | 1709256SM | 2 | WASHER, Spring, 5/16 |
| 0040 | 1728007SM | 1 | PAD, Footrest, R.H. |
| 0050 | 1728006SM | 1 | PAD, Footrest, L.H. |
| 0060 | 885896YP | 1 | FUEL TANK ASSEMBLY (Includes Ref. Nos. 0060-10, 0060-20, 0060-30 & 0060-40) |
| 0060-10 | 095197MA | 2 | CLAMP, Hose |
| 0060-20 | ---- | 1 | TANK, Fuel (Not a serviceable part, order Ref. 0060) |
| 0060-30 | 1734981SM | 1 | HOSE, Fuel |
| 0060-40 | 795027 | 1 | CAP, Gas |
| 0070 | 1739535YP | 1 | POD, Grey, L.H. |
| 0080 | 1754214YP | 1 | SEAT, Lo Back (Use on 96cm Models) |
| 0081 | 1738013YP | 1 | SEAT, Bottom, Mesh (Use on 107cm) Models) |
| 0082 | 1738014YP | 1 | SEAT, Back, Mesh (Use on 107cm) Models) |
| 0083 | 1737848BM | 2 | SUPPORT, Mesh Seat (Use on 107cm) Models) |
| 0084 | 703354 | 8 | SCREW, 5/16-18 x 3/4, G5 (Use on 96cm Models) |
| 0085 | 1738015YP | 1 | SWITCH, Lever, Seat (Use with Mesh Seat) |
| 0090 | 1731300SM | 4 | SPACER, 5/16 ID x 1-1/4 OD x 5/16 |
| 0100 | 1727265ASM | 1 | SUPPORT, Seat |
| 0110 | 1755767BMYP | 1 | LATCH, Seat |
| 0120 | 1930595SM | 4 | CAPSCREW, Hex Flange Whiz Lock, 5/16-18 x 1 |
| 0130 | 703298 | 4 | WASHER, 5/16 |
| 0180 | 1739934YP | 2 | BUMPER, Rubber |
| 0190 | 885538AYP | 1 | PIVOT, Seat |
| 0200 | 1930601SM | 2 | CAPSCREW, Hex Washer Head, Taptite, 5/16-18 x 5/8 |
| 0210 | 1739537YP | 1 | POD, R.H. |
| 0220 | 1960536SM | 6 | SCREW, Hex Washer Head, Plastite, 1/4 x 1/2 |
| 0230 | 1722302SM | 1 | GRIP |
| 0250 | 1729576SM | 2 | BOLT, Shoulder, 5/16-18 |
| 0260 | 703115 | 2 | NUT, Hex Flange, ESNA, 5/16-18 |
| 0280 | 885382YP | 2 | WASHER, Rubber |
| 0320 | 885834YP | 1 | ROD, Gas Tank |
| 0330 | 1001963MA | 1 | RING, Foam |
| 0340 | 1401377MA | 2 | BUMPER, Front |
| 0350 | 7016704SM | 2 | FASTENER, Panel |
| 0360 | 1704724SM | 2 | COVER, Spring |
| 0370 | 1709256SM | 2 | WASHER, Spring, 5/16 |
| 0380 | 1960282SM | 2 | BOLT, Carriage, 5/16-18 x 3/4, G5 |
| 0390 | 1923114SM | 1 | CAPSCREW, Hex Head, 1/2-13 x 1, G5 |
| 0400 | 1960170SM | 1 | WASHER, 1/2 |
| 0410 | 5025038SM | 1 | NUT, 1/2-13 |
| 0420 | 1704728SM | 2 | SPRING, Compression |
| 0430 | 1750296YP | 1 | FOAM STRIP (Use with Mesh Seat) |

Footnotes

The above parts group applies to the following Mfg. Nos.:

| | |
|--------------------------|--------------------------|
| 2691105-00 - ELT2242RDF | 2691121-01 - ELT17538RDF |
| 2691105-01 - ELT2242RDF | 2691122-00 - ELT1838RDF |
| 2691106-00 - ELT2642RDF | 2691122-01 - ELT1838RDF |
| 2691106-01 - ELT2642RDF | |
| 2691121-00 - ELT17538RDF | |

Seat Deck & Fuel Tank Group

| REF NO | PART NO. | QTY. | DESCRIPTION |
|--------|-----------|------|---|
| 0440 | 7023354YP | 1 | SWITCH, Seat, Push Button (NC) (gray) (Use with Lo Back Seat) |

Not for
Reproduction

Footnotes

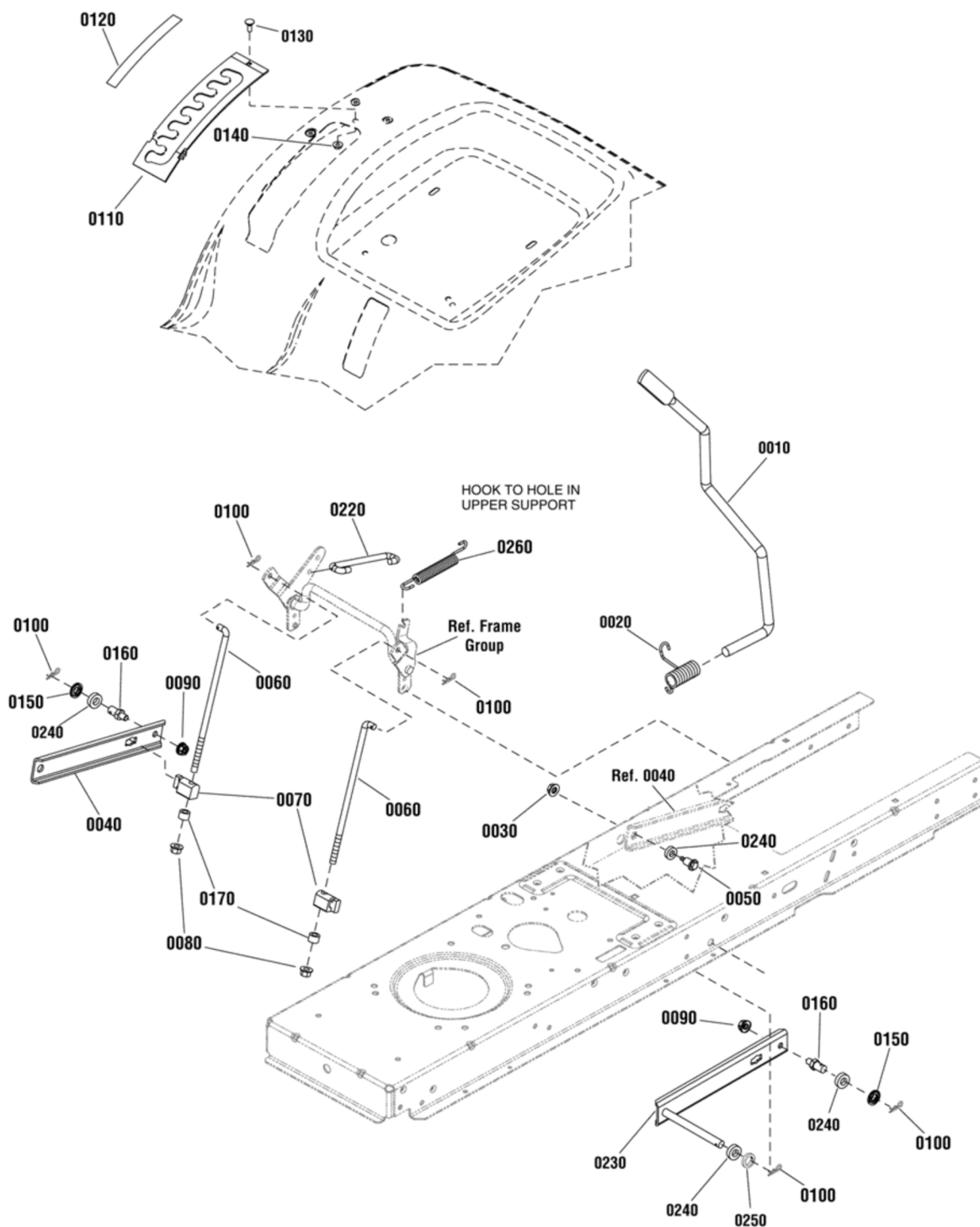
The above parts group applies to the following Mfg. Nos.:

| | |
|--------------------------|--------------------------|
| 2691105-00 - ELT2242RDF | 2691121-01 - ELT17538RDF |
| 2691105-01 - ELT2242RDF | 2691122-00 - ELT1838RDF |
| 2691106-00 - ELT2642RDF | 2691122-01 - ELT1838RDF |
| 2691106-01 - ELT2642RDF | |
| 2691121-00 - ELT17538RDF | |

Lift Group

NOTE: Unless noted otherwise, use the standard hardware torque specification chart.

885450



The above parts group applies to the following Mfg. Nos.:

- | | |
|--------------------------|-------------------------|
| 2691105-00 - ELT2242RDF | 2691122-00 - ELT1838RDF |
| 2691105-01 - ELT2242RDF | 2691122-01 - ELT1838RDF |
| 2691106-00 - ELT2642RDF | |
| 2691106-01 - ELT2642RDF | |
| 2691121-00 - ELT17538RDF | |

Lift Group

| REF NO | PART NO. | QTY. | DESCRIPTION |
|--------|-----------|------|------------------------------------|
| 0010 | 1728070 | 1 | ROD, Lift Handle, 17.7" |
| 0020 | 1729652 | 1 | SPRING, Torsion, 2.12 Inch |
| 0030 | 1931277 | 1 | NUT, Hex, Flange Whizlock, 5/16-18 |
| 0040 | 1731417BM | 1 | ARM, Rear Lift, RH |
| 0050 | 1732426 | 1 | BOLT, Shoulder |
| 0060 | 1727955 | 2 | ROD, Lower Life, 10.00 LG |
| 0070 | 1731894 | 2 | TRUNNION |
| 0080 | 1960687 | 2 | NUT, Hex Flange, 3/8-16 ESNA |
| 0090 | 1931211 | 2 | NUT, Hex, Flange Lock, 3/8-16 |
| 0100 | 1960074 | 5 | CLIP, Spring |
| 0110 | 1727985A | 1 | QUADRANT, Lift Height |
| 0120 | 1730264 | 1 | DECAL, Height Of Cut |
| 0130 | 1960252 | 1 | BOLT, Carriage, 1/4-20 x 5/8 G5 |
| 0140 | 1930641 | 1 | NUT, Hex Flange Whiz, 1/4-20 |
| 0150 | 1960170 | 2 | WASHER, 1/2 |
| 0160 | 721221 | 2 | PIN, Threaded Shoulder |
| 0170 | 1666294 | 2 | SPACER |
| 0220 | 1727954 | 1 | ROD, Lift, 5.43 LG |
| 0230 | 885523BM | 1 | ARM, Rear Lift, LH |
| 0240 | 885382 | 4 | WASHER, Rubber |
| 0250 | 720173 | 1 | WASHER, Flat, .81 |
| 0260 | 722453 | 1 | SPRING, Extension |

Not for
Reproduction

Footnotes

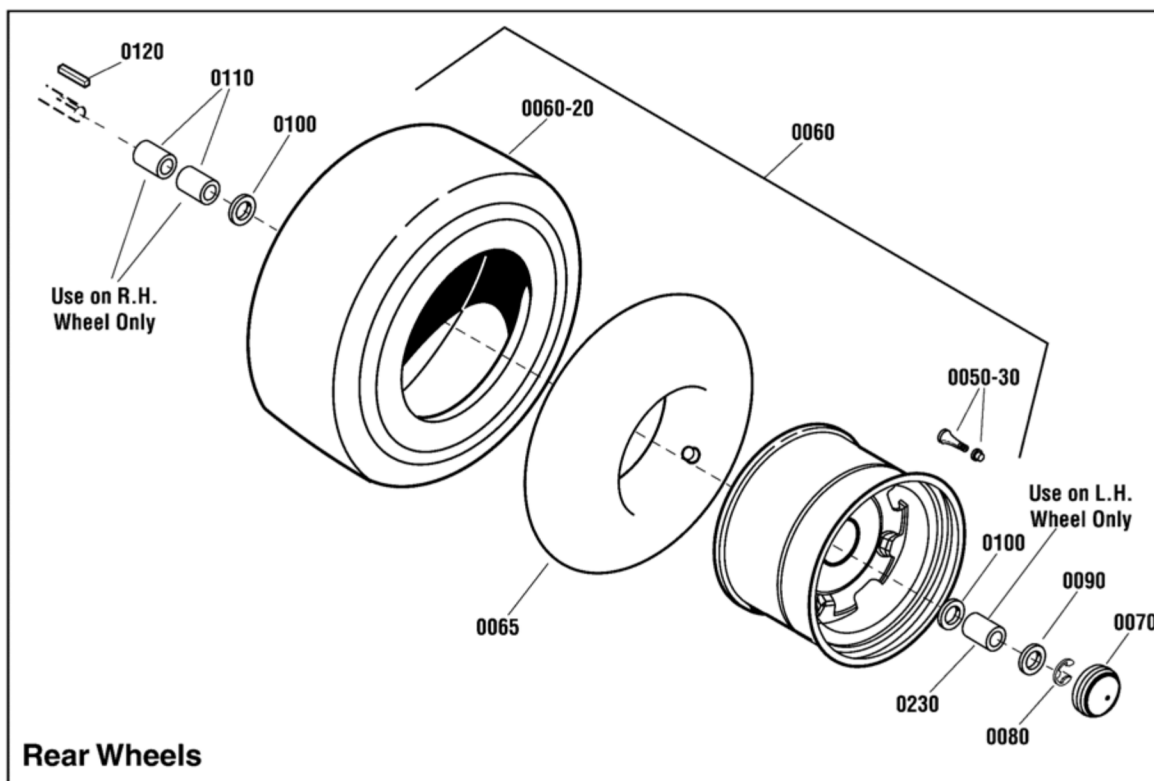
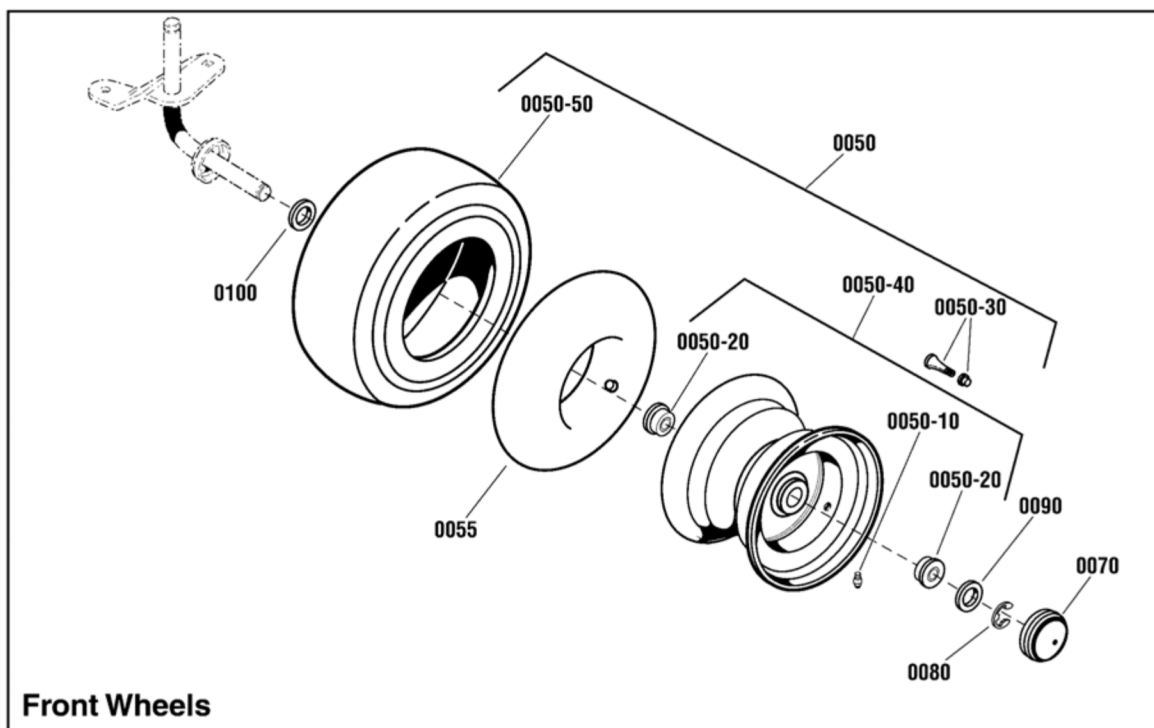
The above parts group applies to the following Mfg. Nos.:

| | |
|--------------------------|-------------------------|
| 2691105-00 - ELT2242RDF | 2691122-00 - ELT1838RDF |
| 2691105-01 - ELT2242RDF | 2691122-01 - ELT1838RDF |
| 2691106-00 - ELT2642RDF | |
| 2691106-01 - ELT2642RDF | |
| 2691121-00 - ELT17538RDF | |

Wheel & Tire Group

NOTE: Unless noted otherwise, use the standard hardware torque specification chart.

W885940



The above parts group applies to the following Mfg. Nos.:

- | | |
|--------------------------|--------------------------|
| 2691105-00 - ELT2242RDF | 2691121-01 - ELT17538RDF |
| 2691105-01 - ELT2242RDF | 2691122-00 - ELT1838RDF |
| 2691106-00 - ELT2642RDF | 2691122-01 - ELT1838RDF |
| 2691106-01 - ELT2642RDF | |
| 2691121-00 - ELT17538RDF | |

Wheel & Tire Group

| REF NO | PART NO. | QTY. | DESCRIPTION |
|---------|-----------|------|---|
| 0050 | 1729708SM | 2 | WHEEL & TIRE ASSEMBLY, Front (Includes Ref. Nos. 0050-10, 0050-20, 0050-30, 0050-40 & 0050-50) |
| 0050-10 | 2812808SM | 1 | FITTING, Lube |
| 0050-20 | 1713167SM | 2 | BEARING, 3/4 |
| 0050-30 | 2172353SM | 4 | VALVE STEM & CAP |
| 0050-40 | 1726301SM | 1 | WHEEL & BUSHINGS ASSEMBLY, Front (Includes Ref. Nos. 0050-10 & 0050-30) |
| 0050-50 | 1731951SM | 1 | TIRE, Kenda, Turf Rider, Front, 15 x 6.00 - 6 |
| 0055 | 1664090SM | 2 | TUBE, Tire, Front |
| 0060 | 885457YP | 2 | WHEEL & TIRE ASSEMBLY, Rear, 20 x 8-8 (Includes Ref. Nos. 0050-30 & 0060-20) (Used on 17.5HP & 18HP Models) |
| 0060 | 1732324SM | 2 | WHEEL & TIRE ASSEMBLY, Rear, 22" (Includes Ref. Nos. 0050-30 & 0060-20) (Used on 22HP & 26HP Models) |
| 0060-20 | ---- | 1 | TIRE, Rear, K358 x 20 x 8.94-8 (Not a serviceable part, order Ref. 0060) |
| 0060-20 | ---- | 2 | TIRE, Rear, K358 x 22 x 10-8 (Not a serviceable part, order Ref. 0060) |
| 0065 | 2164247SM | 2 | TUBE, Tire, Rear |
| 0070 | 094618MA | 4 | HUB CAP |
| 0080 | 0011X3MA | 4 | E-RING |
| 0090 | 17X195MA | 4 | WASHER, Flat |
| 0100 | 17X160MA | 6 | WASHER, Flat, 3/4 x 1-1/4 |
| 0110 | 1730181SM | 2 | SPACER, 3/4 ID x 1-1/4 OD x 1-5/8, RH (Use on R.H. Side Only) |
| 0120 | 021553MA | 2 | KEY, Square, 3/16 |
| 0230 | 885578YP | 1 | SPACER, Wheel, LH (Use on L.H. Side Only) |

Not for
Reproduction

Footnotes

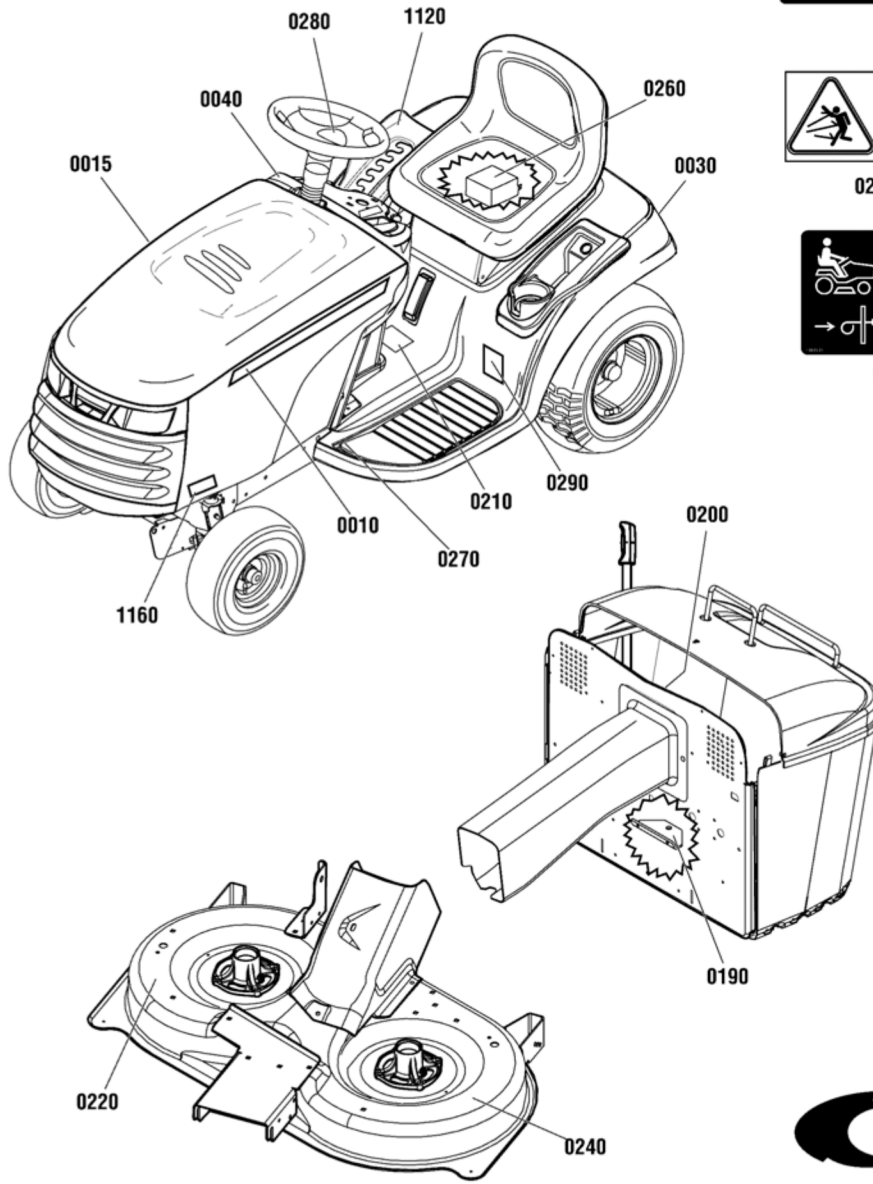
The above parts group applies to the following Mfg. Nos.:

| | |
|--------------------------|--------------------------|
| 2691105-00 - ELT2242RDF | 2691121-01 - ELT17538RDF |
| 2691105-01 - ELT2242RDF | 2691122-00 - ELT1838RDF |
| 2691106-00 - ELT2642RDF | 2691122-01 - ELT1838RDF |
| 2691106-01 - ELT2642RDF | |
| 2691121-00 - ELT17538RDF | |

Decals Group

NOTE: Unless noted otherwise, use the standard hardware torque specification chart.

D885823



0210



0200



0220



0030



0190



0260



0040



0270



0240



1160



0290



0280

The above parts group applies to the following Mfg. Nos.:

- 2691105-00 - ELT2242RDF
- 2691121-01 - ELT17538RDF
- 2691105-01 - ELT2242RDF
- 2691122-00 - ELT1838RDF
- 2691106-00 - ELT2642RDF
- 2691122-01 - ELT1838RDF
- 2691106-01 - ELT2642RDF
-
- 2691121-00 - ELT17538RDF

Decals Group

| REF NO | PART NO. | QTY. | DESCRIPTION |
|--------|-----------|------|--------------------------------------|
| 0010 | 1731390SM | 1 | DECAL, Stripe, LH |
| 0015 | 1731391SM | 1 | DECAL, Stripe, RH |
| 0030 | 7101935YP | 1 | DECAL, Roll Release |
| 0040 | 885749YP | 1 | DECAL, Ignition Switch Symbols |
| 0190 | 48X511MA | 1 | DECAL, Drawbar Warning Symbol |
| 0200 | 1721107SM | 1 | DECAL, Discharge Tube Symbols |
| 0210 | 1723175SM | 1 | DECAL, Tunnel |
| 0220 | 1720389SM | 1 | DECAL, Danger Rotation Blade Symbols |
| 0240 | 885624YP | 1 | DECAL, Cutting Width, 96cm |
| 0240 | 1753467YP | 1 | DECAL, Cutting Width, 107cm |
| 0260 | 885627YP | 1 | DECAL, Battery |
| 0270 | 48X736MA | 1 | DECAL, Clutch/Brake |
| 0280 | 1731418SM | 1 | DECAL, Steering Wheel |
| 0290 | 1735542YP | 1 | DECAL, Regent XL |
| 1120 | 1730264SM | 1 | DECAL, Height of Cut |
| 1160 | 885782YP | 1 | DECAL, Model, ELT17538RDF |
| 1160 | 885783YP | 1 | DECAL, Model, ELT1838RDF |
| 1160 | 885875YP | 1 | DECAL, Model, ELT2242RDF |
| 1160 | 885876YP | 1 | DECAL, Model, ELT2642RDF |

Not for
Reproduction

Footnotes

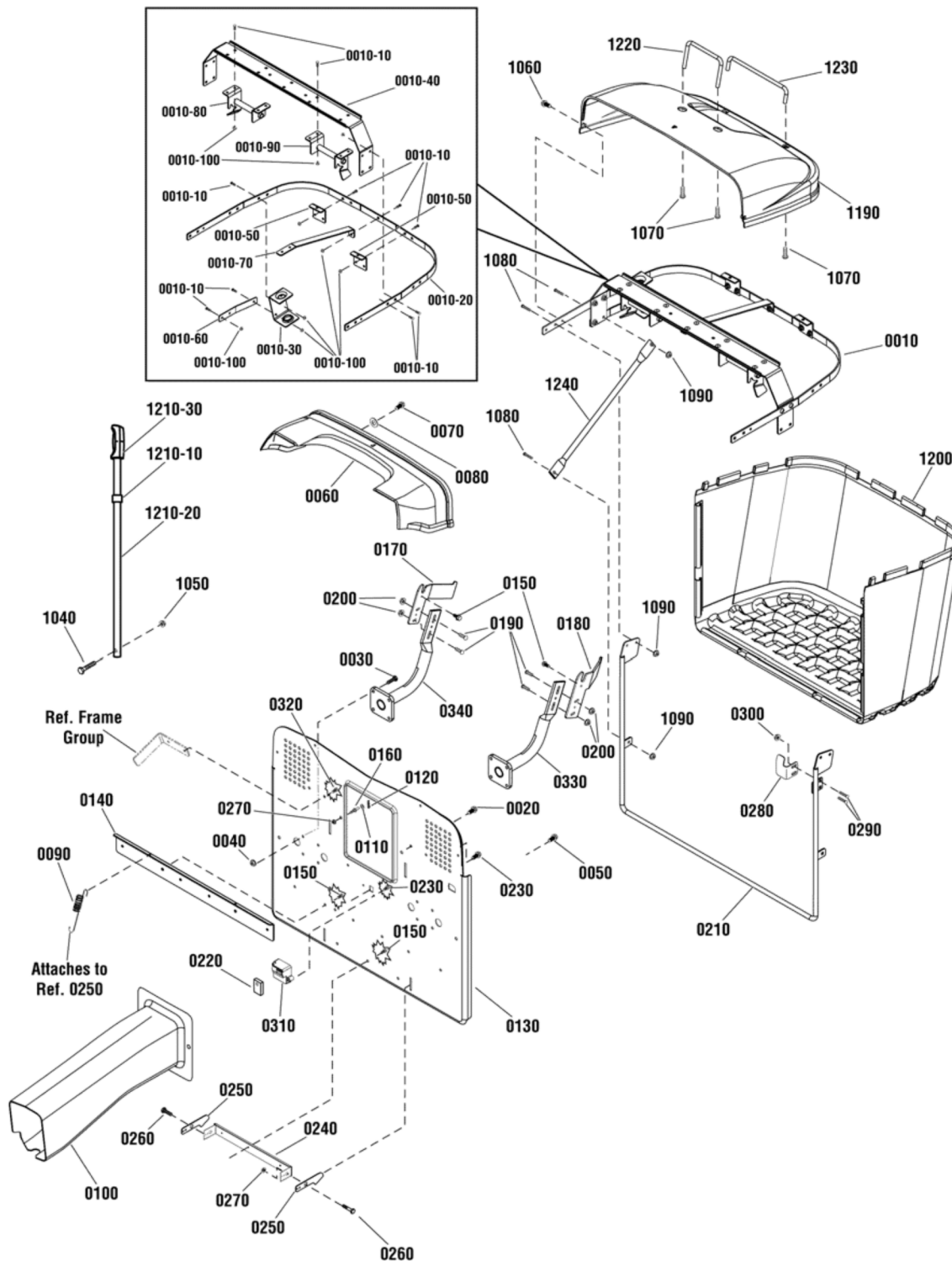
The above parts group applies to the following Mfg. Nos.:

| | |
|--------------------------|--------------------------|
| 2691105-00 - ELT2242RDF | 2691121-01 - ELT17538RDF |
| 2691105-01 - ELT2242RDF | 2691122-00 - ELT1838RDF |
| 2691106-00 - ELT2642RDF | 2691122-01 - ELT1838RDF |
| 2691106-01 - ELT2642RDF | |
| 2691121-00 - ELT17538RDF | |

Collector Group - 280 Liter

885708

NOTE: Unless noted otherwise,
use the standard hardware torque
specification chart.



The above parts group applies to the following Mfg. Nos.:

- 2691121-00 - ELT17538RDF
- 2691121-01 - ELT17538RDF
- 2691122-00 - ELT1838RDF
- 2691122-01 - ELT1838RDF

Collector Group - 280 Liter

| REF NO | PART NO. | QTY. | DESCRIPTION |
|----------|-----------|------|--|
| 0010 | 885560 | 1 | FRAME ASSEMBLY |
| 0010-10 | 720057 | 23 | BOLT, Carriage, 1/4-20 X 5/8 (Included in Ref. 0010) |
| 0010-20 | 885413A | 1 | FRAME, Upper (Included in Ref. 0010) |
| 0010-30 | 885416A | 1 | SUPPORT, Dump Handle (Included in Ref. 0010) |
| 0010-40 | 885507A | 1 | CROSS BRACE (Included in Ref. 0010) |
| 0010-50 | 885514A | 2 | BRACKET, Mounting, Long (Included in Ref. 0010) |
| 0010-60 | 885520A | 1 | SUPPORT STRAP, Dump Handle (Included in Ref. 0010) |
| 0010-70 | 885525A | 1 | SUPPORT, Back, Frame (Included in Ref. 0010) |
| 0010-80 | 885561A | 1 | BAGGER LOCATOR ASSEMBLY, LH (Included in Ref. 0010) |
| 0010-90 | 885562A | 1 | BAGGER LOCATOR ASSEMBLY, RH (Included in Ref. 0010) |
| 0010-100 | 1930641 | 23 | NUT, Hex Flange, 1/4-20 (Included in Ref. 0010) |
| 0020 | 1664847SM | 4 | CAPSCREW, Hex Washer Head, Taptite, 5/16-18 x 3/4 |
| 0030 | 1931202 | 8 | CAPSCREW, Hex Washer Head, Taptite, 5/16-18 x 1-1/4 |
| 0040 | 720139 | 10 | NUT, Hex Flange, Serrated, 5/16-18 |
| 0050 | 1664847SM | 2 | CAPSCREW, Hex Washer Head, Taptite, 5/16-18 x 3/4 |
| 0060 | 885400 | 1 | COVER, Transition |
| 0070 | 1664847SM | 4 | CAPSCREW, Hex Washer Head, Taptite, 5/16-18 x 3/4 |
| 0080 | 1919326 | 4 | WASHER, 5/16 |
| 0090 | 722494 | 2 | SPRING, Extension |
| 0100 | 885461 | 1 | CHUTE |
| 0110 | 1960170 | 2 | WASHER, 1/2 |
| 0120 | 1960074 | 2 | CLIP, Hair Pin |
| 0130 | 885651A | 1 | BACK PLATE |
| 0140 | 885470A | 1 | BRACE, Lower Back Plate |
| 0150 | 1664847SM | 7 | CAPSCREW, Hex Washer Head, Taptite, 5/16-18 x 3/4 |
| 0160 | 721221 | 2 | PIN, Threaded Shoulder |
| 0170 | 885494A | 1 | PLATE, Rotation, RH |
| 0180 | 885473A | 1 | PLATE, Rotation, LH |
| 0190 | 1931333 | 4 | BOLT, Carriage, Short Neck, 5/16-18 x 3/4, G5 |
| 0200 | 720139 | 4 | NUT, Hex Flange, Serrated, 5/16-18 |
| 0210 | 885566A | 1 | FRAME, Bagger |
| 0220 | 885573 | 1 | SWITCH, Bag Full |
| 0230 | 880760 | 2 | SCREW, Plastite, #10-14 x 7/8 |
| 0240 | 885497A | 1 | BRACKET, Bagger Latch |
| 0250 | 885496A | 2 | LATCH, Bagger |
| 0260 | 720091 | 2 | BOLT, Shoulder |
| 0270 | 720142 | 4 | NUT, Hex Flange, Center Lock, 3/8-16 |
| 0280 | 885489A | 1 | PLATE, Switch |
| 0290 | 720057 | 2 | BOLT, Carriage, 1/4-20 x 5/8 |
| 0300 | 1930641 | 2 | NUT, Hex Flange, Whiz Lock, 1/4-20 |
| 0310 | 885618 | 1 | COVER, Bag Full Switch |
| 0320 | 722858 | 4 | CAPSCREW, 5/16-18 x 3/4 |
| 0330 | 885652A | 1 | SUPPORT, Bagger, LH |
| 0340 | 885653A | 1 | SUPPORT, Bagger, RH |

Footnotes

The above parts group applies to the following Mfg. Nos.:

2691121-00 - ELT17538RDF
2691121-01 - ELT17538RDF
2691122-00 - ELT1838RDF
2691122-01 - ELT1838RDF

Collector Group - 280 Liter

| REF NO | PART NO. | QTY. | DESCRIPTION |
|---------|----------|------|--|
| 1040 | 720033 | 1 | CAPSCREW, Hex Flange Lock, 1/4-20 x 1-1/4 |
| 1050 | 720146 | 1 | NUT, Hex Flange, Lock, 1/4-20 |
| 1060 | 885564 | 2 | SCREW, Torx, 1/4-20 |
| 1070 | 7091016 | 4 | SCREW, Hex Washer Head, Self Tap, 1/4-20 x 5/8 |
| 1080 | 1960593 | 8 | BOLT, Carriage, 1/4-20 x 5/8 |
| 1090 | 1930641 | 8 | NUT, Hex Flange, Whiz Lock, 1/4-20 |
| 1190 | 885402 | 1 | COVER, Collector, Orange |
| 1200 | 885510 | 1 | BAG, Collector |
| 1210-10 | 885433 | 1 | ADJUSTER, Bagger Handle |
| 1210-20 | 885518A | 1 | HANDLE, Bagger |
| 1210-30 | 1723359 | 1 | GRIP, Lift Rod |
| 1220 | 885425A | 1 | HANDLE, Front |
| 1230 | 885430A | 1 | HANDLE, Back |
| 1240 | 885429A | 2 | STIFFENER |

Not for
Reproduction

Footnotes

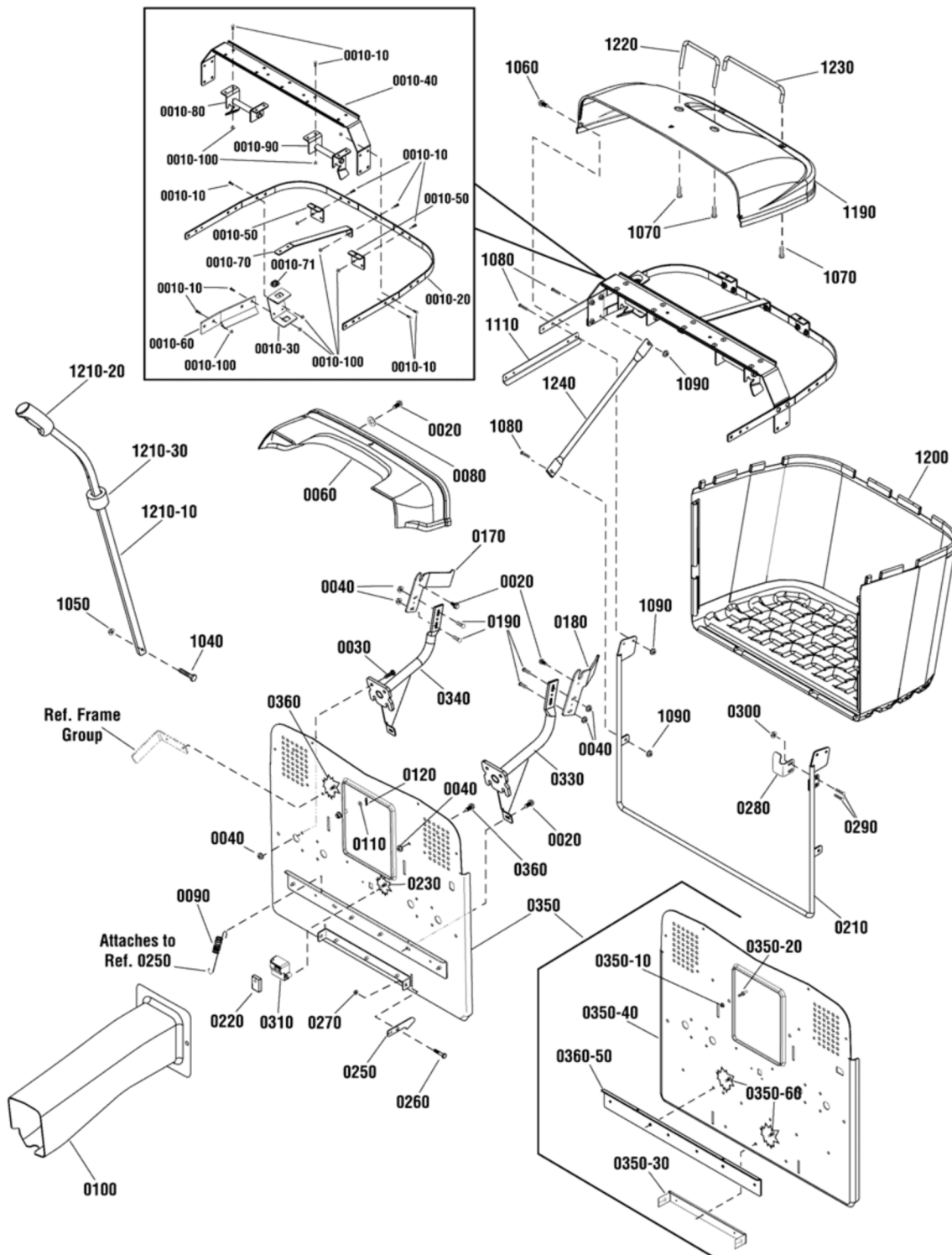
The above parts group applies to the following Mfg. Nos.:

2691121-00 - ELT17538RDF
2691121-01 - ELT17538RDF
2691122-00 - ELT1838RDF
2691122-01 - ELT1838RDF

Collector Group - 350 Liter

885932

NOTE: Unless noted otherwise,
use the standard hardware torque
specification chart.



The above parts group applies to the following Mfg. Nos.:

- 2691105-00 - ELT2242RDF
- 2691105-01 - ELT2242RDF
- 2691106-00 - ELT2642RDF
- 2691106-01 - ELT2642RDF

Collector Group - 350 Liter

| REF NO | PART NO. | QTY. | DESCRIPTION |
|----------|------------|------|--|
| 0010-10 | 002X82MA | 25 | BOLT, Carriage, 1/4-20 X 5/8 |
| 0010-20 | 885759BMYP | 1 | FRAME, Upper |
| 0010-30 | 885858BMYP | 1 | SUPPORT, Dump Handle |
| 0010-40 | 885507AYP | 1 | CROSS BRACE |
| 0010-50 | 885514AYP | 2 | BRACKET, Mounting, Long |
| 0010-60 | 885889BMYP | 1 | SUPPORT STRAP, Dump Handle |
| 0010-70 | 885525AYP | 1 | SUPPORT, Back, Frame |
| 0010-71 | 885864YP | 1 | BUSHING, Handle |
| 0010-80 | 885866BMYP | 1 | BAGGER LOCATOR ASSEMBLY, LH |
| 0010-90 | 885867BMYP | 1 | BAGGER LOCATOR ASSEMBLY, RH |
| 0010-100 | 1930641SM | 25 | NUT, Hex Flange, 1/4-20 |
| 0020 | 703228 | 8 | CAPSCREW, Hex Washer Head, Taptite, 5/16-18 x 3/4 |
| 0030 | 703167 | 8 | CAPSCREW, Hex Washer Head, Taptite, 5/16-18 x 1-1/4 |
| 0040 | 1931277SM | 10 | NUT, Hex Flange, 5/16-18 |
| 0060 | 885755YP | 1 | COVER, Transition |
| 0080 | 1919326SM | 4 | WASHER, 5/16 |
| 0090 | 165X75MA | 2 | SPRING, Extension |
| 0100 | 885769YP | 1 | CHUTE |
| 0110 | 1960170SM | 2 | WASHER, 1/2 |
| 0120 | 1960074SM | 2 | CLIP, Hair Pin |
| 0170 | 885853BMYP | 1 | PLATE, Rotation, RH |
| 0180 | 885852BMYP | 1 | PLATE, Rotation, LH |
| 0190 | 703185 | 4 | BOLT, Carriage, Short Neck, 5/16-18 x 3/4, G5 |
| 0210 | 885566AYP | 1 | FRAME, Bagger |
| 0220 | 885573YP | 1 | SWITCH, Bag Full |
| 0230 | 880760YP | 2 | SCREW, Plastite, #10-14 x 7/8 |
| 0250 | 885496AYP | 2 | LATCH, Bagger |
| 0260 | 009X39MA | 2 | BOLT, Shoulder |
| 0270 | 015X84MA | 2 | NUT, Hex Flange, Center Lock, 3/8-16 |
| 0280 | 885489AYP | 1 | PLATE, Switch |
| 0290 | 002X82MA | 2 | BOLT, Carriage, 1/4-20 x 5/8 |
| 0300 | 1930641SM | 2 | NUT, Hex Flange, Whiz Lock, 1/4-20 |
| 0310 | 885618YP | 1 | COVER, Bag Full Switch |
| 0330 | 885825BMYP | 1 | SUPPORT, Bagger, LH |
| 0340 | 885826BMYP | 1 | SUPPORT, Bagger, RH |
| 0350 | 885893BMYP | 1 | BACK PLATE ASSEMBLY (Includes Ref. Nos. 0350-10, 0350-20, 0350-30, 0350-40, 0350-50 & 0350-60) |
| 0350-10 | 015X84MA | 2 | NUT, Hex Flange, Center Lock, 3/8-16 |
| 0350-20 | 094067MA | 2 | PIN, Threaded Shoulder |
| 0350-30 | 885497AYP | 1 | BRACKET, Bagger Latch |
| 0350-40 | ----- | 1 | BACKPLATE (Not a serviceable part. Order Ref. No. 0350) |
| 0350-50 | ----- | 1 | BRACE, Lower Back Plate (Not a serviceable part. Order Ref. No. 0350) |
| 0350-60 | 703228 | 7 | CAPSCREW, Hex Washer Head, Taptite, 5/16-18 x 3/4 |
| 0360 | 703410 | 6 | BOLT, 5/16-18 x 1 |
| 1040 | 001X94MA | 1 | CAPSCREW, Hex Flange Lock, 1/4-20 x 1-1/4 |

Footnotes

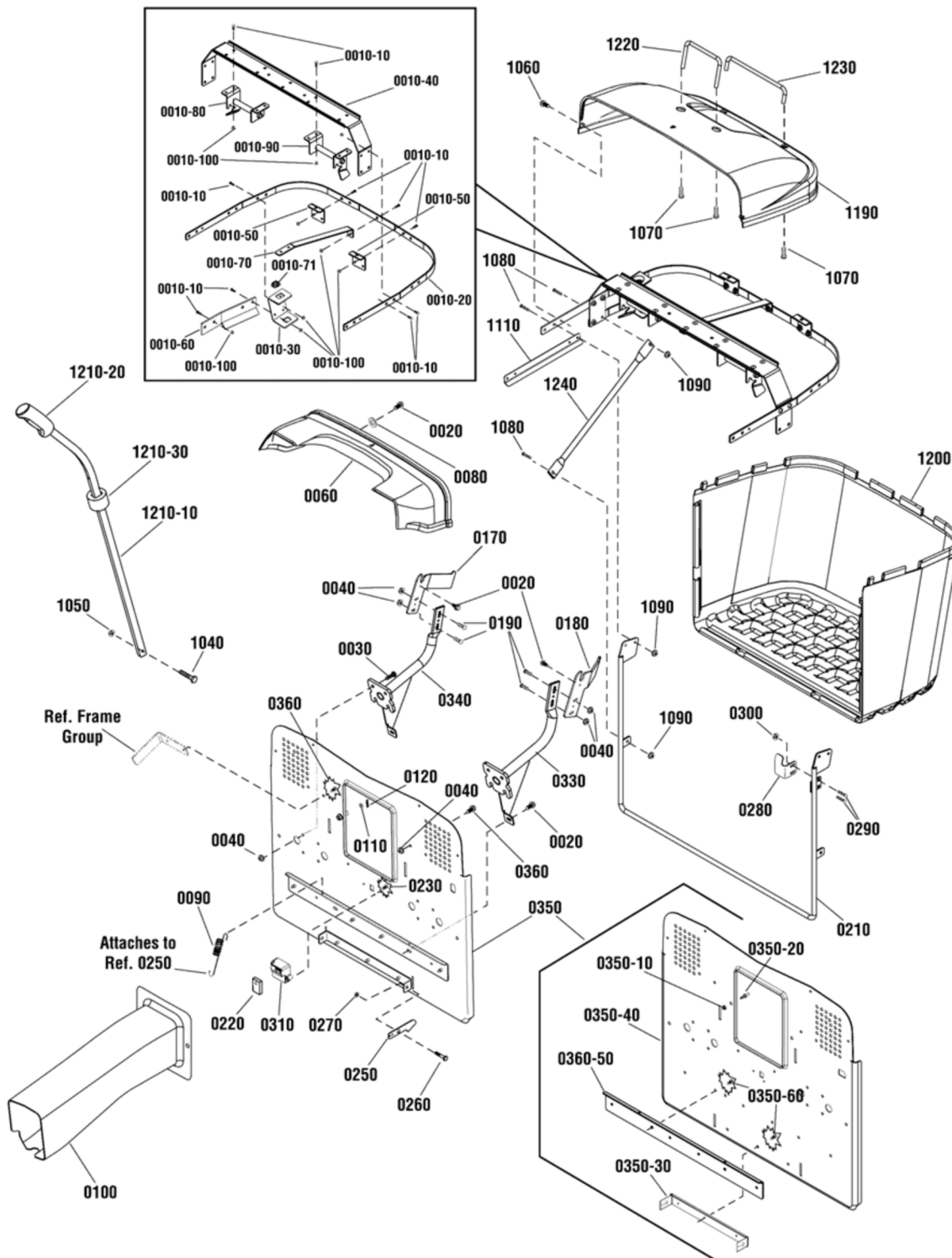
The above parts group applies to the following Mfg. Nos.:

2691105-00 - ELT2242RDF
 2691105-01 - ELT2242RDF
 2691106-00 - ELT2642RDF
 2691106-01 - ELT2642RDF

Collector Group - 350 Liter

885932

NOTE: Unless noted otherwise,
use the standard hardware torque
specification chart.



The above parts group applies to the following Mfg. Nos.:

- 2691105-00 - ELT2242RDF
- 2691105-01 - ELT2242RDF
- 2691106-00 - ELT2642RDF
- 2691106-01 - ELT2642RDF

Collector Group - 350 Liter

| REF NO | PART NO. | QTY. | DESCRIPTION |
|---------|------------|------|--|
| 1050 | 015X89MA | 1 | NUT, Hex Flange, Lock, 1/4-20 |
| 1060 | 885564YP | 2 | SCREW, Torx, 1/4-20 |
| 1070 | 7091016YP | 4 | SCREW, Hex Washer Head, Self Tap, 1/4-20 x 5/8 |
| 1080 | 002X82MA | 8 | BOLT, Carriage, 1/4-20 x 5/8 |
| 1090 | 1930641SM | 12 | NUT, Hex Flange, Whiz Lock, 1/4-20 |
| 1110 | 885758BMYP | 2 | GUSSET |
| 1190 | 885403YP | 1 | COVER, Collector, Black |
| 1200 | 885761YP | 1 | BAG, Collector, 350L |
| 1210-10 | 885859BMYP | 1 | HANDLE, Bagger |
| 1210-20 | 885886YP | 1 | GRIP, Lift Rod |
| 1210-30 | 885888YP | 1 | ADJUSTER, Bagger Handle |
| 1220 | 885425AYP | 1 | HANDLE, Front |
| 1230 | 885430AYP | 1 | HANDLE, Back |
| 1240 | 885773BMYP | 2 | STIFFENER |

Not for
Reproduction

Footnotes

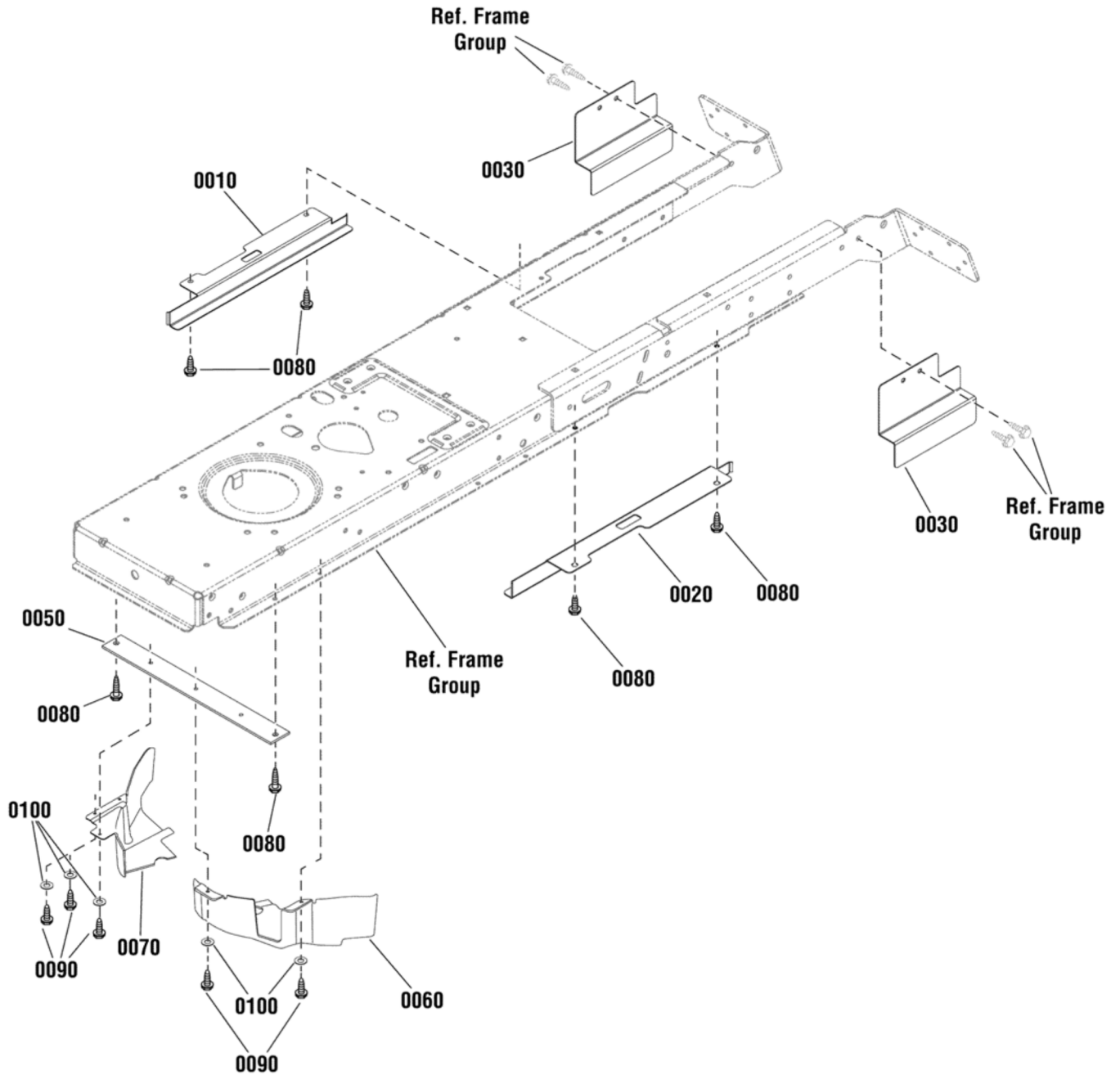
The above parts group applies to the following Mfg. Nos.:

2691105-00 - ELT2242RDF
2691105-01 - ELT2242RDF
2691106-00 - ELT2642RDF
2691106-01 - ELT2642RDF

Guard Group

NOTE: Unless noted otherwise,
use the standard hardware torque
specification chart.

885597



The above parts group applies to the following Mfg. Nos.:

2691105-00 - ELT2242RDF
2691105-01 - ELT2242RDF
2691106-00 - ELT2642RDF
2691106-01 - ELT2642RDF
2691121-00 - ELT17538RDF

2691121-01 - ELT17538RDF
2691122-00 - ELT1838RDF
2691122-01 - ELT1838RDF

Guard Group

| REF NO | PART NO. | QTY. | DESCRIPTION |
|--------|-----------|------|---|
| 0010 | 885598AYP | 1 | GUARD, Middle Right |
| 0020 | 885599AYP | 1 | GUARD, Middle Left |
| 0030 | 885892YP | 2 | GUARD, Rear |
| 0050 | 885602AYP | 1 | BRACE, Guard |
| 0060 | 885604YP | 1 | GUARD, Front, LH |
| 0070 | 885605YP | 1 | GUARD, Front, RH |
| 0080 | 703228 | 6 | CAPSCREW, Hex Washer Head, Taptite, 5/16-18 x 3/4 |
| 0090 | 1925003SM | 5 | CAPSCREW, Hex Washer Head, Taptite, 1/4-20 x 1/2 |
| 0100 | 2821319SM | 5 | WASHER, 1/4 |

Not for
Reproduction

Footnotes

The above parts group applies to the following Mfg. Nos.:

| | |
|--------------------------|--------------------------|
| 2691105-00 - ELT2242RDF | 2691121-01 - ELT17538RDF |
| 2691105-01 - ELT2242RDF | 2691122-00 - ELT1838RDF |
| 2691106-00 - ELT2642RDF | 2691122-01 - ELT1838RDF |
| 2691106-01 - ELT2642RDF | |
| 2691121-00 - ELT17538RDF | |

107cm Mower Deck

| REF NO | PART NO. | QTY. | DESCRIPTION |
|---------|------------|------|--|
| 0010-10 | 1735573YP | 1 | HOUSING, Spindle |
| 0010-20 | 1735399YP | 2 | BEARING, Ball |
| 0010-30 | 1735326YP | 1 | SHAFT, Spindle |
| 0010-50 | 1735323YP | 2 | SHIELD, Arbor |
| 0010-60 | 1735328YP | 2 | SPACER, Bearing |
| 0010-70 | 1960766YP | 2 | RING, Self Lock |
| 0020-10 | 885420YP | 1 | SHAFT, Spindle, RH (LH Thread) |
| 0020-20 | 1735323YP | 2 | SHIELD, Arbor |
| 0020-30 | 1735328YP | 2 | SPACER, Bearing |
| 0020-40 | 1735399YP | 2 | BEARING, Ball |
| 0020-50 | 1735573YP | 1 | HOUSING, Spindle |
| 0020-60 | 1960766YP | 2 | RING, Self Lock |
| 0030 | 1930600SM | 8 | SCREW, Hex Washer Head, Taptite, 5/16-18 x 1-1/2 |
| 0040 | 1750338YP | 2 | SPACER, Mower Drive |
| 0050 | 1737835YP | 2 | PULLEY, V, Deep Groove |
| 0060 | 1656916SM | 4 | WASHER, Spring, 0.475 |
| 0070 | 1926110SM | 1 | CAPSCREW, Hex Head, 7/16-14 x 2-3/4, GR5 |
| 0080 | 885456YP | 1 | CAPSCREW, Socket Head, 7/16-14 x 2-3/4 |
| 0090 | 885715BMYP | 1 | BLADE, RH, 21" |
| 0100 | 885455YP | 1 | CAPSCREW, Socket Head, 7/16-14 x 1 |
| 0110 | 885716BMYP | 1 | BLADE, LH, 21" |
| 0120 | 1920676SM | 1 | CAPSCREW, Hex Head, 7/16-14 x 1, GR5 |
| 0130 | 1735716YP | 2 | ADAPTER, Washout Port |
| 0140 | 703228 | 6 | SCREW, Thread Roll, 5/16-18 x 3/4 |
| 0160 | 1931277SM | 40 | NUT, Flange, 5/16-18, GR5 |
| 0170 | 885723BMYP | 1 | SUPPORT, Idler Arm |
| 0200 | 885848BMYP | 1 | IDLER ARM |
| 0210 | 1727935SM | 1 | SPACER, Pivot, 5/16 ID x 1-3/4 OD |
| 0220 | 001X84MA | 1 | CAPSCREW, Hex Head, 5/16-18 x 1, GR5 |
| 0230 | 015X88MA | 1 | NUT, Hex Flange, Center Lock, 5/16-18 |
| 0250 | 885482YP | 2 | PULLEY, Deck Idler |
| 0260 | 1923701SM | 2 | CAPSCREW, Hex Head, 3/8-16 x 2, GR5 |
| 0270 | 703333 | 3 | NUT, Hex Flange, 3/8-16 |
| 0280 | 885534YP | 2 | BELT GUIDE |
| 0300 | 885724BMYP | 1 | BRACKET, Deck, Rear Lift, LH |
| 0310 | 703185 | 15 | BOLT, Carriage, 5/16-18 x 3/4, GR5 |
| 0330 | 1919326SM | 10 | WASHER, Flat, 5/16 |
| 0340 | 1401105MA | 1 | BELT GUIDE, LONG |
| 0360 | 885714YP | 1 | BELT, 112.48" EL, HAA Section |
| 0370 | 1715435SM | 1 | SPRING, Extension |
| 0420 | 885730YP | 1 | COVER, Pulley |
| 0450 | 703297 | 6 | RETAINER, 5/16, GR5 |
| 0470 | 885719YP | 1 | CENTER CAP |
| 0500 | 885845BMYP | 1 | BRACKET, Idler, Fixed |

Footnotes

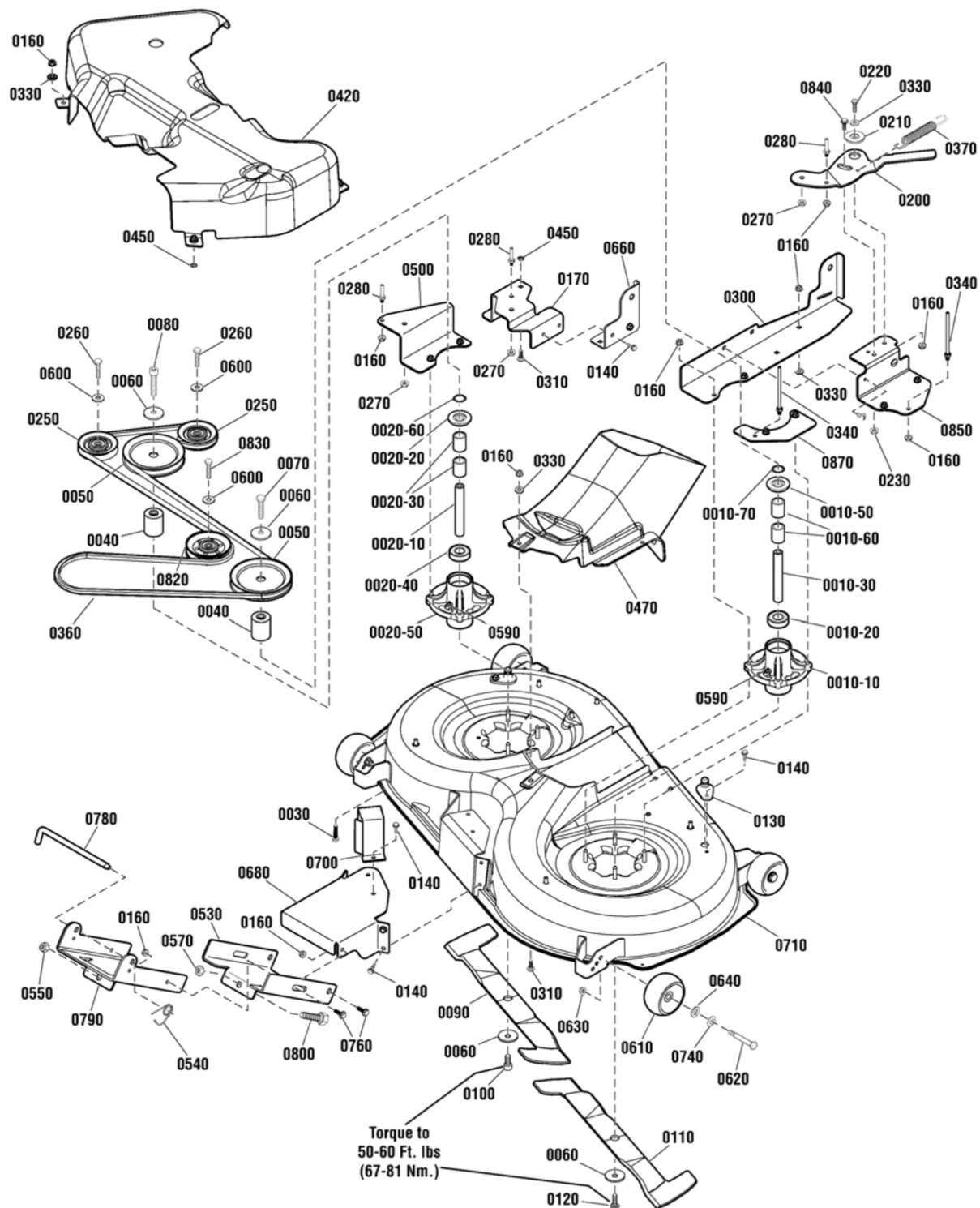
The above parts group applies to the following Mfg. Nos.:

2691105-00 - ELT2242RDF
2691105-01 - ELT2242RDF
2691106-00 - ELT2642RDF
2691106-01 - ELT2642RDF

107cm Mower Deck

NOTE: Unless noted otherwise,
use the standard hardware torque
specification chart.

885933



The above parts group applies to the following Mfg. Nos.:

- 2691105-00 - ELT2242RDF
- 2691105-01 - ELT2242RDF
- 2691106-00 - ELT2642RDF
- 2691106-01 - ELT2642RDF

107cm Mower Deck

| REF NO | PART NO. | QTY. | DESCRIPTION |
|--------|------------|------|--|
| 0530 | 885734BMYP | 1 | BRACKET, Front Connector |
| 0540 | 2176012SM | 1 | RETAINER, Pin Spring |
| 0550 | 1960379SM | 1 | NUT, Hex Lock, ESNA Light, 1/2-13 |
| 0570 | 1913744SM | 1 | NUT, Hex Jam, 1/2-13 |
| 0590 | 1704314SM | 2 | FITTING, Lube |
| 0600 | 1922755SM | 2 | WASHER, Flat, 3/8 |
| 0610 | 1714760SM | 2 | WHEEL |
| 0620 | 2108765SM | 2 | BOLT, Wheel, 3/8-16 x 2-3/4, 3/4" Thread |
| 0630 | 703158 | 2 | NUT, Hex Flange, ESNA, 3/8-16 |
| 0640 | 1960170SM | 2 | WASHER, 1/2 |
| 0660 | 885720BMYP | 1 | BRACKET, Deck, Rear, RH |
| 0680 | 885727BMYP | 1 | SUPPORT, Front |
| 0700 | 885728BMYP | 1 | BRACKET, Front Upstop |
| 0710 | 885827BMYP | 1 | DECK ASSEMBLY, 107cm |
| 0740 | 0020X3MA | 2 | WASHER, Spring, 1/2 |
| 0760 | 1732426SM | 4 | BOLT, Shoulder, 5/16-18 x 1/2 |
| 0780 | 1731414SM | 1 | ROD, Latch |
| 0790 | 885699BMYP | 1 | BRACKET, Front Hanger |
| 0800 | 885710YP | 1 | BOLT, 1/2 x 3 |
| 0820 | 885937YP | 1 | PULLEY, Idler |
| 0830 | 703406 | 1 | CAPSCREW, Hex Head, 3/8-16 x 1-1/2, G5 |
| 0840 | 1752802YP | 1 | BOLT, Shoulder, 5/16-18 x 1 |
| 0850 | 885846BMYP | 1 | BRACKET, Idler Mount |
| 0870 | 885729BM | 1 | PLATE, Belt Guide Mount |

Footnotes

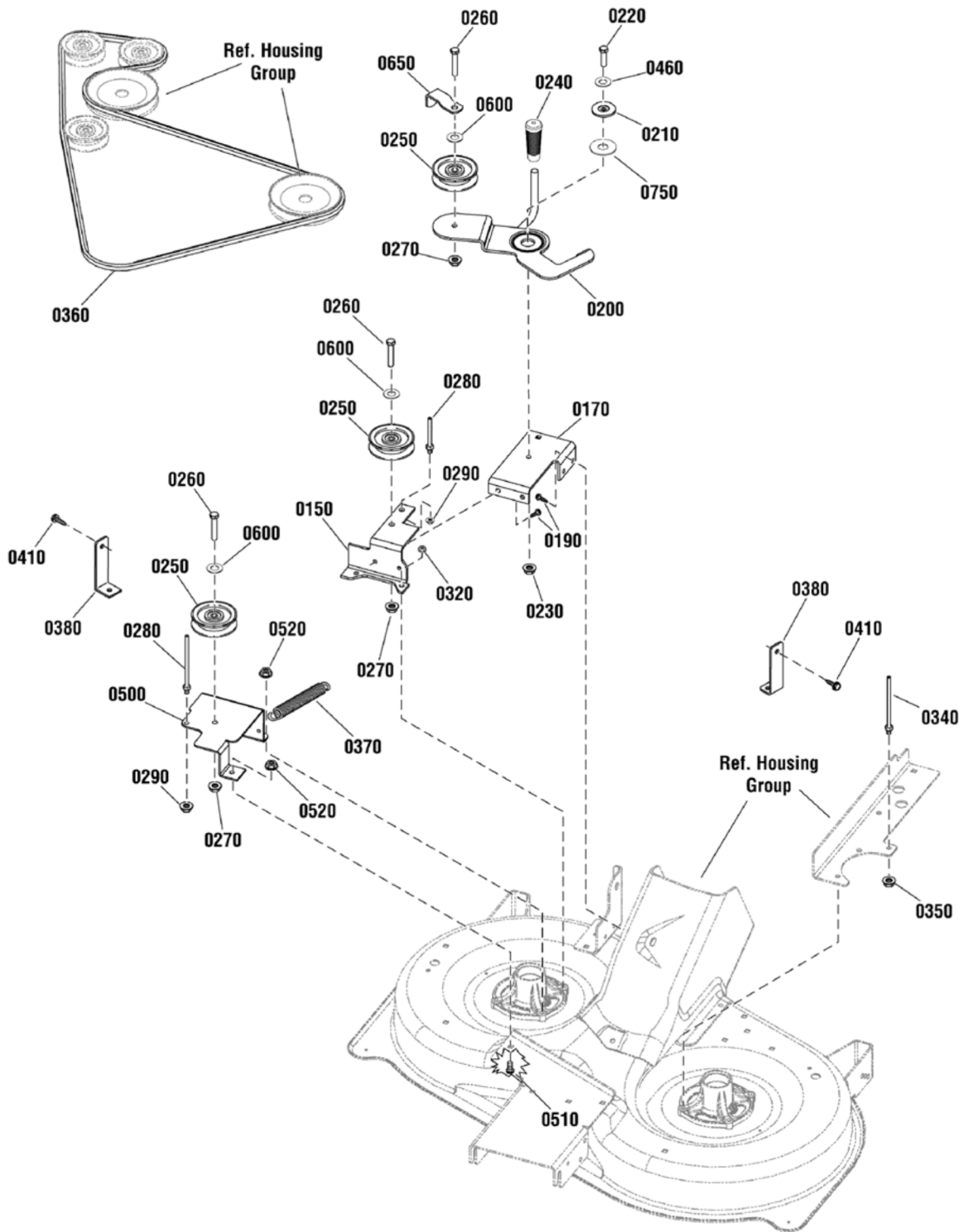
The above parts group applies to the following Mfg. Nos.:

2691105-00 - ELT2242RDF
2691105-01 - ELT2242RDF
2691106-00 - ELT2642RDF
2691106-01 - ELT2642RDF

96cm Mower Deck - Clutch Group

885709b

NOTE: Unless noted otherwise,
use the standard hardware torque
specification chart.



The above parts group applies to the following Mfg. Nos.:

- 2691121-00 - ELT17538RDF
- 2691121-01 - ELT17538RDF
- 2691122-00 - ELT1838RDF
- 2691122-01 - ELT1838RDF

96cm Mower Deck - Clutch Group

| REF NO | PART NO. | QTY. | DESCRIPTION |
|--------|-----------|------|---|
| 0150 | 885481BM | 1 | BRACKET, Idler, RH |
| 0170 | 885516BM | 1 | SUPPORT, Idler Arm |
| 0190 | 1664847SM | 4 | CAPSCREW, Hex Washer Head, Taptite, 5/16-18 x 3/4 |
| 0200 | 885559BM | 1 | DECK IDLER ASSEMBLY |
| 0210 | 1727935 | 1 | SPACER, Pivot, 0.330ID 1.76OD |
| 0220 | 1921333 | 1 | CAPSCREW, Hex Head, 5/16-18 x 1, G5 |
| 0230 | 720145 | 1 | NUT, Hex Flange, Center Lock, 5/16-18 |
| 0240 | 721120 | 1 | GRIP |
| 0250 | 885482 | 3 | PULLEY, Deck Idler |
| 0260 | 1923701 | 3 | CAPSCREW, Hex Head, 3/8-16 x 2, G5 |
| 0270 | 1931211 | 3 | NUT, Hex Flange, Whiz Lock, 3/8-16 |
| 0280 | 885534 | 2 | BELT GUIDE |
| 0290 | 1931277 | 2 | NUT, Hex Flange, Whiz Lock, 5/16-18 |
| 0320 | 1931277 | 2 | NUT, Hex Flange, Whiz Lock, 5/16-18 |
| 0340 | 721974 | 1 | BELT GUIDE, Long |
| 0350 | 1931277 | 1 | NUT, Hex Flange, Whiz Lock, 5/16-18 |
| 0360 | 885483 | 1 | BELT, DECK (91.35" EL, HAA section) |
| 0370 | 1715435 | 1 | SPRING, Extension, 1 |
| 0380 | 885527BM | 2 | UPSTOP |
| 0410 | 1664847SM | 4 | CAPSCREW, Hex Washer Head, 5/16-18 x 3/4 |
| 0460 | 1919326 | 1 | WASHER, 5/16 |
| 0500 | 885556BM | 1 | BRACKET, Idler, Fixed |
| 0510 | 1921333 | 1 | CAPSCREW, Hex Head, 5/16-18 x 1, G5 |
| 0520 | 1931277 | 3 | NUT, Hex Flange, Whiz Lock, 5/16-18 |
| 0600 | 1922755 | 3 | WASHER, Flat, 3/8 |
| 0650 | 1677135BM | 1 | GUARD, Spring |
| 0750 | 885649 | 1 | SHIM |

Footnotes

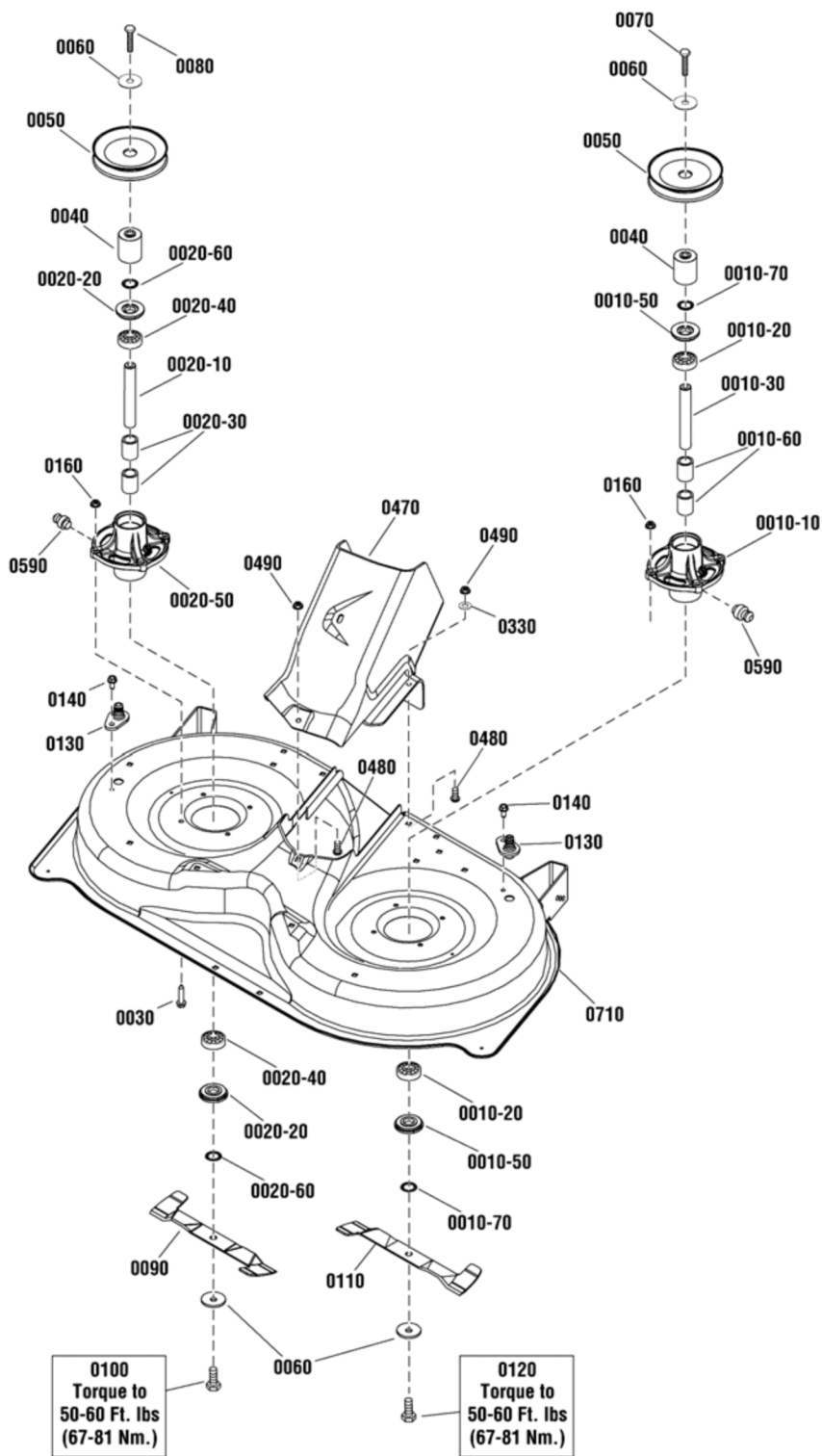
The above parts group applies to the following Mfg. Nos.:

2691121-00 - ELT17538RDF
2691121-01 - ELT17538RDF
2691122-00 - ELT1838RDF
2691122-01 - ELT1838RDF

96cm Mower Deck - Housing, Arbors & Blades Group

885709a

NOTE: Unless noted otherwise,
use the standard hardware torque
specification chart.



The above parts group applies to the following Mfg. Nos.:

- 2691121-00 - ELT17538RDF
- 2691121-01 - ELT17538RDF
- 2691122-00 - ELT1838RDF
- 2691122-01 - ELT1838RDF

96cm Mower Deck - Housing, Arbors & Blades Group

| REF NO | PART NO. | QTY. | DESCRIPTION |
|---------|-----------|------|---|
| 0010-10 | 1735573 | 2 | HOUSING, Spindle |
| 0010-20 | 1735399 | 4 | BEARING, Ball, 20mm |
| 0010-30 | 1735326 | 1 | SHAFT, Spindle, LH |
| 0010-50 | 1735323 | 4 | SHIELD, Arbor |
| 0010-60 | 1735328 | 4 | SPACER, Bearing |
| 0010-70 | 1960766 | 4 | RING, Self Locking |
| 0020-10 | 885420 | 1 | SHAFT, Spindle, RH (LH Thread) |
| 0020-20 | 1735323 | 4 | SHIELD, Arbor |
| 0020-30 | 1735328 | 4 | SPACER, Bearing |
| 0020-40 | 1735399 | 4 | BEARING, Ball, 20mm |
| 0020-50 | 1735573 | 2 | HOUSING, Spindle |
| 0020-60 | 1960766 | 4 | RING, Self Locking |
| 0030 | 1930600 | 8 | CAPSCREW, Hex Washer Head, Taptite, 5/16-18 x 1-1/2 |
| 0040 | 1750338 | 2 | SPACER, Mower Drive |
| 0050 | 1737835 | 2 | PULLEY, Deep Groove |
| 0060 | 1656916 | 4 | WASHER, Spring, 0.475ID x 1-3/4 OD |
| 0070 | 1926110 | 1 | CAPSCREW, Hex Head, 7/16-14 x 2-3/4. G5 |
| 0080 | 885456 | 1 | CAPSCREW, Socket Head, 7/16-14 x 2-3/4, LH |
| 0090 | 885418BM | 1 | BLADE, RH, 19.5" |
| 0100 | 885455 | 1 | CAPSCREW, Socket Head, 7/16-14 x 1, LH |
| 0110 | 885419BM | 1 | BLADE, LH, 19.5" |
| 0120 | 1920676 | 1 | CAPSCREW, Hex Head, 7/16-14 x 1, G5 |
| 0130 | 1735716 | 2 | ADAPTER, Washout Port |
| 0140 | 1664847SM | 2 | CAPSCREW, Hex Washer Head, Taptite, 5/16-18 x 3/4 |
| 0160 | 1931277 | 6 | NUT, Hex Flange, Whiz Lock, 5/16-18 |
| 0330 | 1919326 | 3 | WASHER, 5/16 |
| 0470 | 885460 | 1 | DECK, CENTER CAP |
| 0480 | 1931333 | 3 | BOLT, Carriage, Short Neck, 5/16-18 x 3/4, G5 |
| 0490 | 1931277 | 3 | NUT, Hex Flange, Whiz Lock, 5/16-18 |
| 0590 | 1704314 | 2 | FITTING, Grease |
| 0710 | 885557BM | 1 | DECK ASSEMBLY |

Footnotes

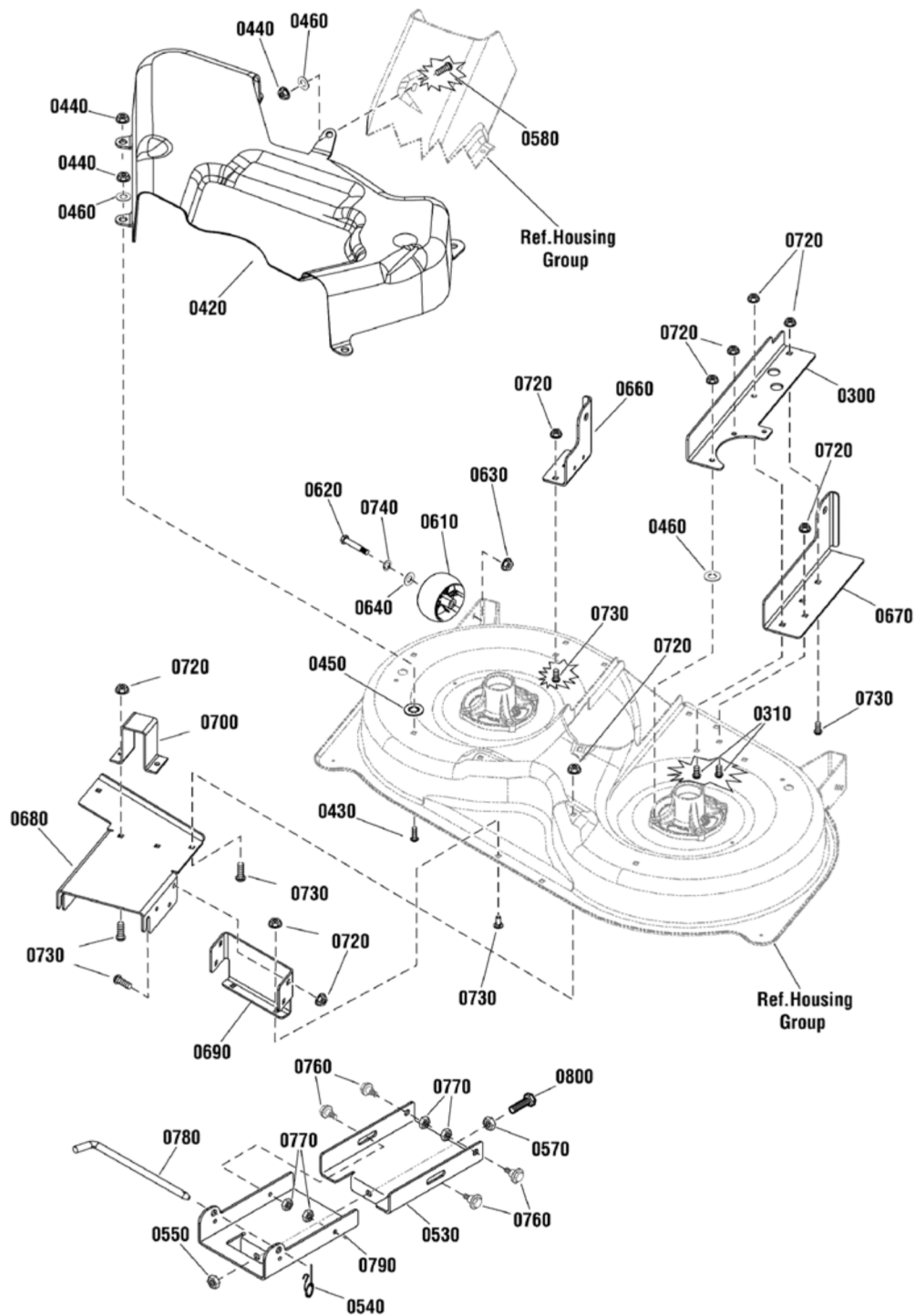
The above parts group applies to the following Mfg. Nos.:

2691121-00 - ELT17538RDF
 2691121-01 - ELT17538RDF
 2691122-00 - ELT1838RDF
 2691122-01 - ELT1838RDF

96cm Mower Deck - Support Group

885709c

NOTE: Unless noted otherwise,
use the standard hardware torque
specification chart.



The above parts group applies to the following Mfg. Nos.:

- 2691121-00 - ELT17538RDF
- 2691121-01 - ELT17538RDF
- 2691122-00 - ELT1838RDF
- 2691122-01 - ELT1838RDF

96cm Mower Deck - Support Group

| REF NO | PART NO. | QTY. | DESCRIPTION |
|--------|----------|------|--|
| 0300 | 885526BM | 1 | BRACKET, Rear Lift, LH |
| 0310 | 1931333 | 2 | BOLT, Carriage, Short Neck, 5/16-18 x 3/4, G5 |
| 0420 | 885543 | 1 | COVER, Pulley |
| 0430 | 1931333 | 5 | BOLT, Carriage, Short Neck, 5/16-18 x 3/4, G5 |
| 0440 | 1931277 | 6 | NUT, Hex Flange, Whiz Lock, 5/16-18 |
| 0450 | 5025498 | 6 | NUT, Push On, 5/16 |
| 0460 | 1919326 | 6 | WASHER, 5/16 |
| 0530 | 885734BM | 1 | BRACKET, Front Connector |
| 0540 | 2176012 | 1 | RETAINER, Pin Spring |
| 0550 | 1960379 | 1 | NUT, Hex Lock, ESNA LIGHT, 1/2-13 |
| 0570 | 1913744 | 1 | NUT, Hex Jam, 1/2-13 |
| 0580 | 720049 | 1 | BOLT, Carriage, 5/16-18 x 5/8 |
| 0610 | 1714760 | 2 | WHEEL, Gauge |
| 0620 | 2108765 | 2 | BOLT, 3/8-16 x 2-3/4 |
| 0630 | 1960687 | 2 | NUT, Hex Flange, ESNA, 3/8-16 |
| 0640 | 1960170 | 2 | WASHER, 1/2 |
| 0660 | 885462BM | 1 | BRACKET, Deck, Rear |
| 0670 | 885463BM | 1 | BRACKET, Rear Lift, LH |
| 0680 | 885738BM | 1 | SUPPORT, Deck Front |
| 0690 | 885740BM | 1 | BRACKET, Front Support |
| 0700 | 885519BM | 1 | BRACKET, Front Upstop |
| 0720 | 1931277 | 14 | NUT, Hex Flange, Whiz Lock, 5/16-18 |
| 0730 | 1931333 | 14 | BOLT, Carriage, Short Neck, 5/16-18 x 3/4, G5 |
| 0740 | 720035 | 2 | WASHER, Spring, .30" ID |
| 0760 | 1732426 | 4 | BOLT, Shoulder, 5/16-18 x .13/16, 1/2" Thread Length |
| 0770 | 1931277 | 4 | NUT, Hex Flange, Whiz Lock, 5/16-18 |
| 0780 | 1731414 | 1 | ROD, Latch |
| 0790 | 885699BM | 1 | BRACKET, Front Hanger |
| 0800 | 885710 | 1 | BOLT, 1/2 x 3 |

Footnotes

The above parts group applies to the following Mfg. Nos.:

2691121-00 - ELT17538RDF
2691121-01 - ELT17538RDF
2691122-00 - ELT1838RDF
2691122-01 - ELT1838RDF

Not for
Reproduction

Hardware Identification & Torque Specifications

| Torque Specification Chart | | | | | | | | |
|--|-----------|------|-----------|------|------------|------|------------|------|
| FOR STANDARD METRIC MACHINE HARDWARE (Tolerance ± 20%) | | | | | | | | |
| Property Class | 5.6 | | 8.8 | | 10.9 | | 12.9 | |
| | Class 5.6 | | Class 8.8 | | Class 10.9 | | Class 12.9 | |
| Size Of Hardware | in/lbs | Nm. | in/lbs | Nm. | in/lbs | Nm. | in/lbs | Nm. |
| | ft/lbs | | ft/lbs | | ft/lbs | | ft/lbs | |
| M3 | 5.88 | .56 | 13.44 | 1.28 | 19.2 | 1.80 | 22.92 | 2.15 |
| M4 | 13.44 | 1.28 | 30.72 | 2.90 | 43.44 | 4.10 | 52.56 | 4.95 |
| M5 | 26.4 | 2.50 | 60.96 | 5.75 | 5.97 | 8.10 | 7.15 | 9.7 |
| M6 | 44.64 | 4.3 | 7.3 | 9.9 | 10.3 | 14 | 12.1 | 16.5 |
| M7 | 5.2 | 7.1 | 12.1 | 16.5 | 16.9 | 23 | 19.9 | 27 |
| M8 | 7.7 | 10.5 | 17.7 | 24 | 25 | 34 | 29 | 40 |
| M10 | 15 | 21 | 35 | 48 | 50 | 67 | 59 | 81 |
| M12 | 26 | 36 | 61 | 83 | 86.2 | 117 | 103 | 140 |
| M14 | 42 | 58 | 101 | 132 | 136 | 185 | 162 | 220 |
| M16 | 64 | 88 | 147 | 200 | 210 | 285 | 250 | 340 |
| M18 | 89 | 121 | 202 | 275 | 287 | 390 | 346 | 470 |
| M20 | 126 | 171 | 290 | 390 | 405 | 550 | 486 | 660 |
| M22 | 169 | 230 | 390 | 530 | 559 | 745 | 656 | 890 |
| M24 | 217 | 295 | 497 | 375 | 708 | 960 | 840 | 1140 |
| M27 | 320 | 435 | 733 | 995 | 1032 | 1400 | 1239 | 1680 |
| M30 | 435 | 590 | 995 | 1350 | 1401 | 1900 | 1681 | 2280 |
| M33 | 590 | 800 | 1349 | 1830 | 1902 | 2580 | 2278 | 3090 |
| M36 | 759 | 1030 | 1740 | 2360 | 2441 | 3310 | 2935 | 3980 |
| M39 | 988 | 1340 | 2249 | 3050 | 3163 | 4290 | 3798 | 5150 |

| Torque Specification Chart | | | | | | |
|---|-------------|-------|-------------|-------|-------------|---------|
| FOR STANDARD MACHINE HARDWARE (Tolerance ± 20%) | | | | | | |
| Hardware Grade | No Marks | | SAE Grade 5 | | SAE Grade 8 | |
| | SAE Grade 2 | | SAE Grade 5 | | SAE Grade 8 | |
| Size Of Hardware | in/lbs | Nm. | in/lbs | Nm. | in/lbs | Nm. |
| | ft/lbs | | ft/lbs | | ft/lbs | |
| 8-32 | 19 | 2.1 | 30 | 3.4 | 41 | 4.6 |
| 8-36 | 20 | 2.3 | 31 | 3.5 | 43 | 4.9 |
| 10-24 | 27 | 3.1 | 43 | 4.9 | 60 | 6.8 |
| 10-32 | 31 | 3.5 | 49 | 5.5 | 68 | 7.7 |
| 1/4-20 | 66 | 7.6 | 8 | 10.9 | 12 | 16.3 |
| 1/4-28 | 76 | 8.6 | 10 | 13.6 | 14 | 19.0 |
| 5/16-18 | 11 | 15.0 | 17 | 23.1 | 25 | 34.0 |
| 5/16-24 | 12 | 16.3 | 19 | 25.8 | 29 | 34.0 |
| 3/8-16 | 20 | 27.2 | 30 | 40.8 | 45 | 61.2 |
| 3/8-24 | 23 | 31.3 | 35 | 47.6 | 50 | 68.0 |
| 7/16-14 | 30 | 40.8 | 50 | 68.0 | 70 | 95.2 |
| 7/16-20 | 35 | 47.6 | 55 | 74.8 | 80 | 108.8 |
| 1/2-13 | 50 | 68.0 | 75 | 102.0 | 110 | 149.6 |
| 1/2-20 | 55 | 74.8 | 90 | 122.4 | 120 | 163.2 |
| 9/16-12 | 65 | 88.4 | 110 | 149.6 | 150 | 204.0 |
| 9/16-18 | 75 | 102.0 | 120 | 163.2 | 170 | 231.2 |
| 5/8-11 | 90 | 122.4 | 150 | 204.0 | 220 | 299.2 |
| 5/8-18 | 100 | 136 | 180 | 244.8 | 240 | 326.4 |
| 3/4-10 | 160 | 217.6 | 260 | 353.6 | 386 | 525.0 |
| 3/4-16 | 180 | 244.8 | 300 | 408.0 | 420 | 571.2 |
| 7/8-9 | 140 | 190.4 | 400 | 544.0 | 600 | 816.0 |
| 7/8-14 | 155 | 210.8 | 440 | 598.4 | 660 | 897.6 |
| 1-8 | 220 | 299.2 | 580 | 788.8 | 900 | 1,244.0 |
| 1-12 | 240 | 326.4 | 640 | 870.4 | 1,000 | 1,360.0 |

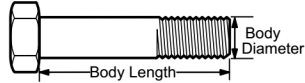
The guides and ruler furnished below are designed to help you select the appropriate hardware.



Nut, M8

Thread Diameter (mm)
Inside Diameter (in)
Threads per inch

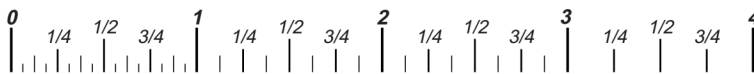
Nut, 1/2-16



Screw, M8 - 1.25 x 25

Thread Diameter (mm)
Body Diameter
Distance between threads (mm)
Threads per inch
Body Length (mm)
Body Length (in)

Screw, 1/2- 16 x 2



Standard Hardware Sizing

When a washer or nut is identified as **1/2"** (M8), this is the *Nominal size*, meaning the *inside diameter* is 1/2 inch (8mm metric thread diameter); if a second number is present it represents the *threads per inch* (distance between threads).

When bolt or capscrew is identified as **1/2 - 16 x 2"** (M8 - 1.25 x 50), this means the *Nominal size*, or body diameter is 1/2 inch (8mm metric thread diameter), the second number, 16, represents the *threads per inch*, (1.25 thread diameter). The final number is the body length of the bolt or screw, 2 inches (50mm).

NOTES

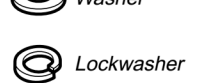
- These torque values are to be used for all hardware excluding: locknuts, self-tapping screws, thread forming screws, sheet metal screws and socket head setscrews.
- Recommended seating torque values for locknuts:
 - for prevailing torque locknuts - use 65% of grade 5 torques.
 - for flange whizlock nuts and screws - use 135% of grade 5 torques.
- Unless otherwise noted on assembly drawings, all torque values must meet this specification.

Common Hardware Types

Hex Head Capscrew



Washer



Carriage Bolt



Hex Nut

Wrench & Fastener Size Guide

| 1/4" Bolt or Nut Wrench—7/16" | 5/16" Bolt or Nut Wrench—1/2" | 3/8" Bolt or Nut Wrench—9/16" | 7/16" Bolt or Nut Wrench (Bolt)—5/8" Wrench (Nut)—11/16" | 1/2" Bolt or Nut Wrench—3/4" |
|----------------------------------|----------------------------------|----------------------------------|--|---------------------------------|
| M6 Bolt or Nut Wrench—10mm | M8 Bolt or Nut Wrench—13mm | M10 Bolt or Nut Wrench—17mm | M12 Bolt or Nut Wrench—19mm | M14 Bolt or Nut Wrench—22mm |

Not for
Reproduction

**IT IS THE POLICY OF BRIGGS & STRATTON CORP. TO IMPROVE ITS PRODUCTS
WHENEVER IT IS POSSIBLE AND PRACTICAL TO DO SO. WE RESERVE THE RIGHT TO
MAKE CHANGES OR ADD IMPROVEMENTS AT ANY TIME WITHOUT INCURRING ANY
OBLIGATION TO MAKE SUCH CHANGES ON PRODUCTS.**

Briggs & Stratton Yard Power Products Group

3515 N. 124 Street / PO Box 702
Wauwatosa, WI 53222 USA

www.simplicitymfg.com

© Copyright 2014 by Briggs & Stratton Corporation
Milwaukee, WI, USA. All rights reserved